

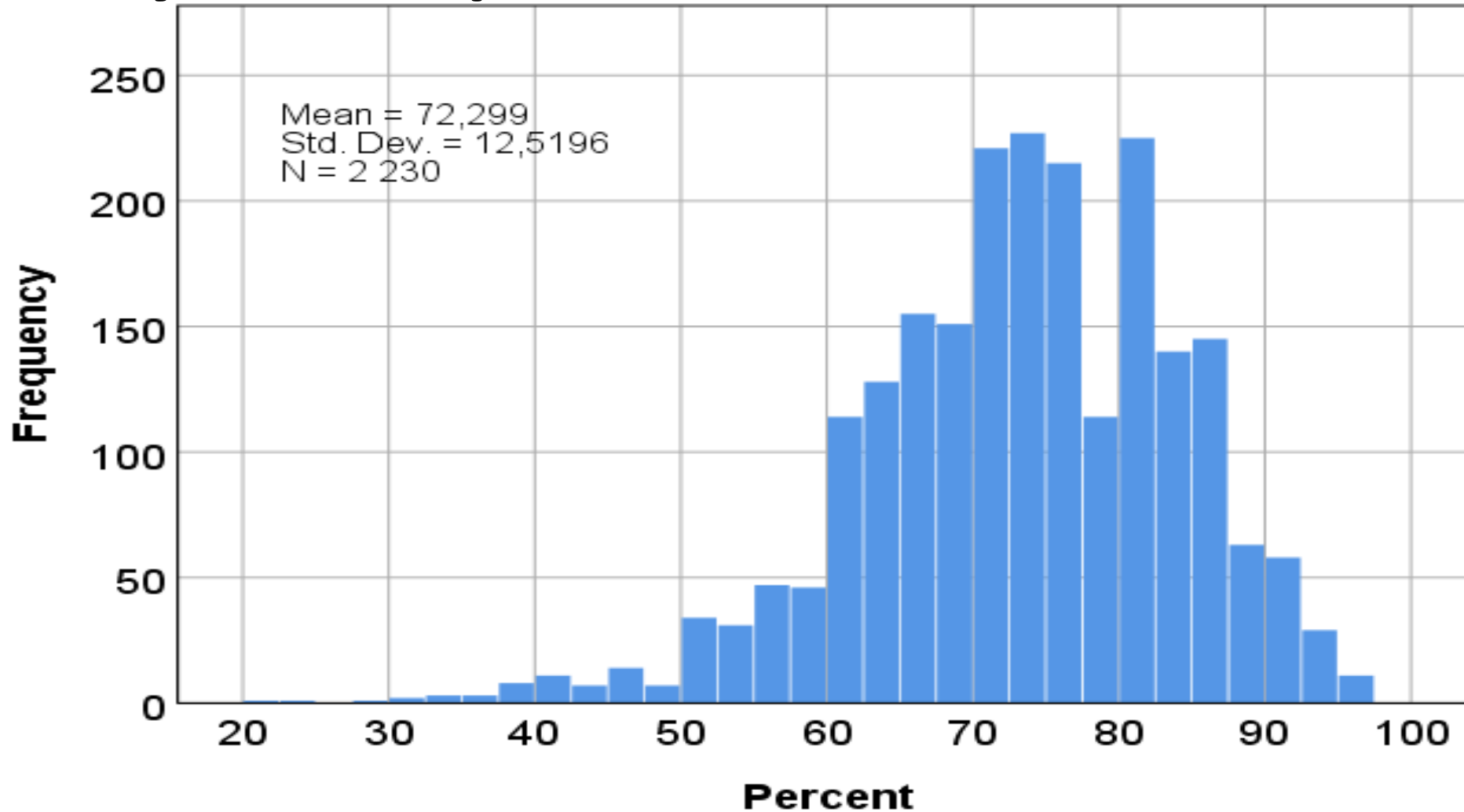


UiO • **Faculty of Dentistry**
University of Oslo

Answer questionnaire

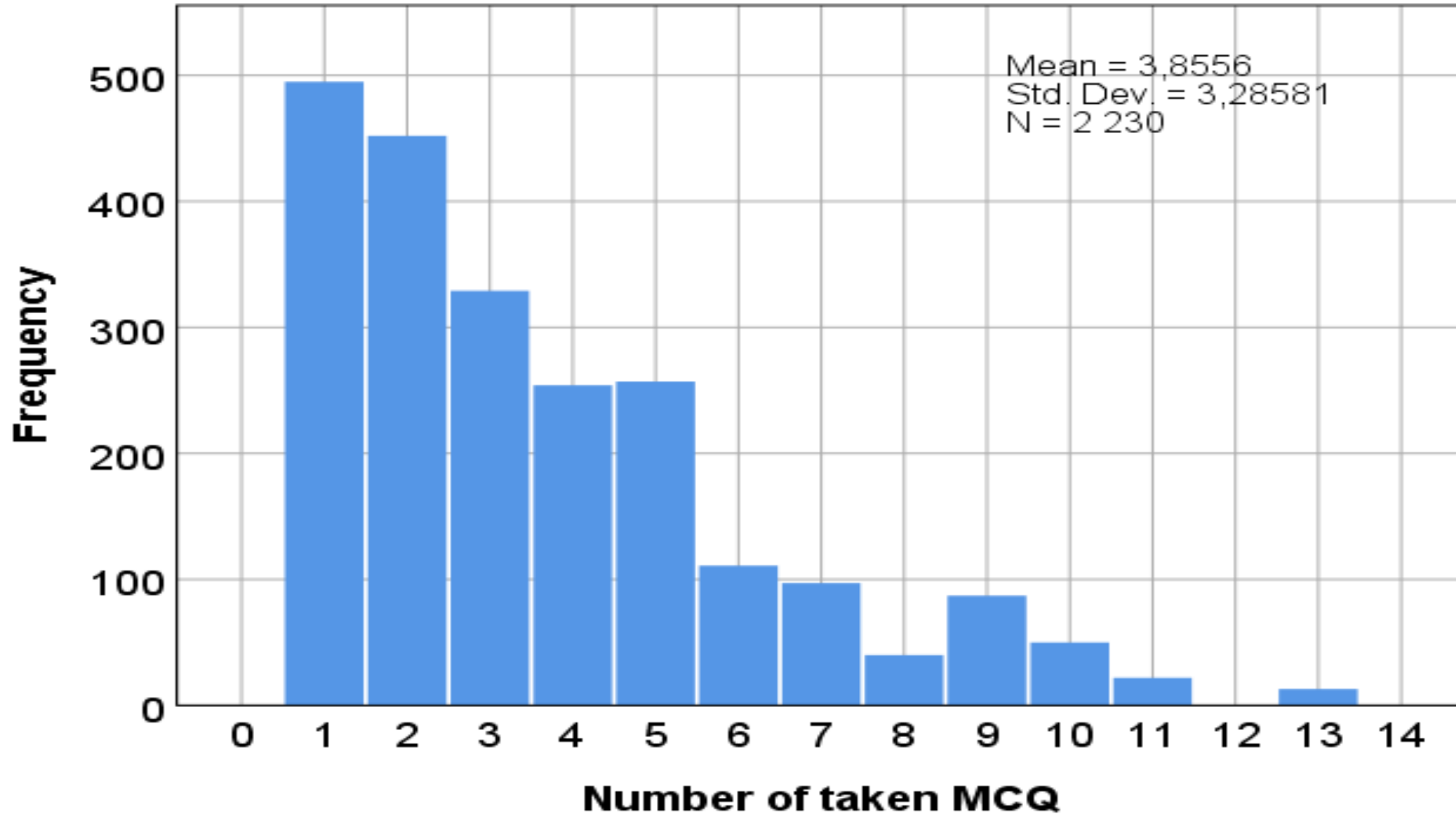


Quality check, questions to difficult?

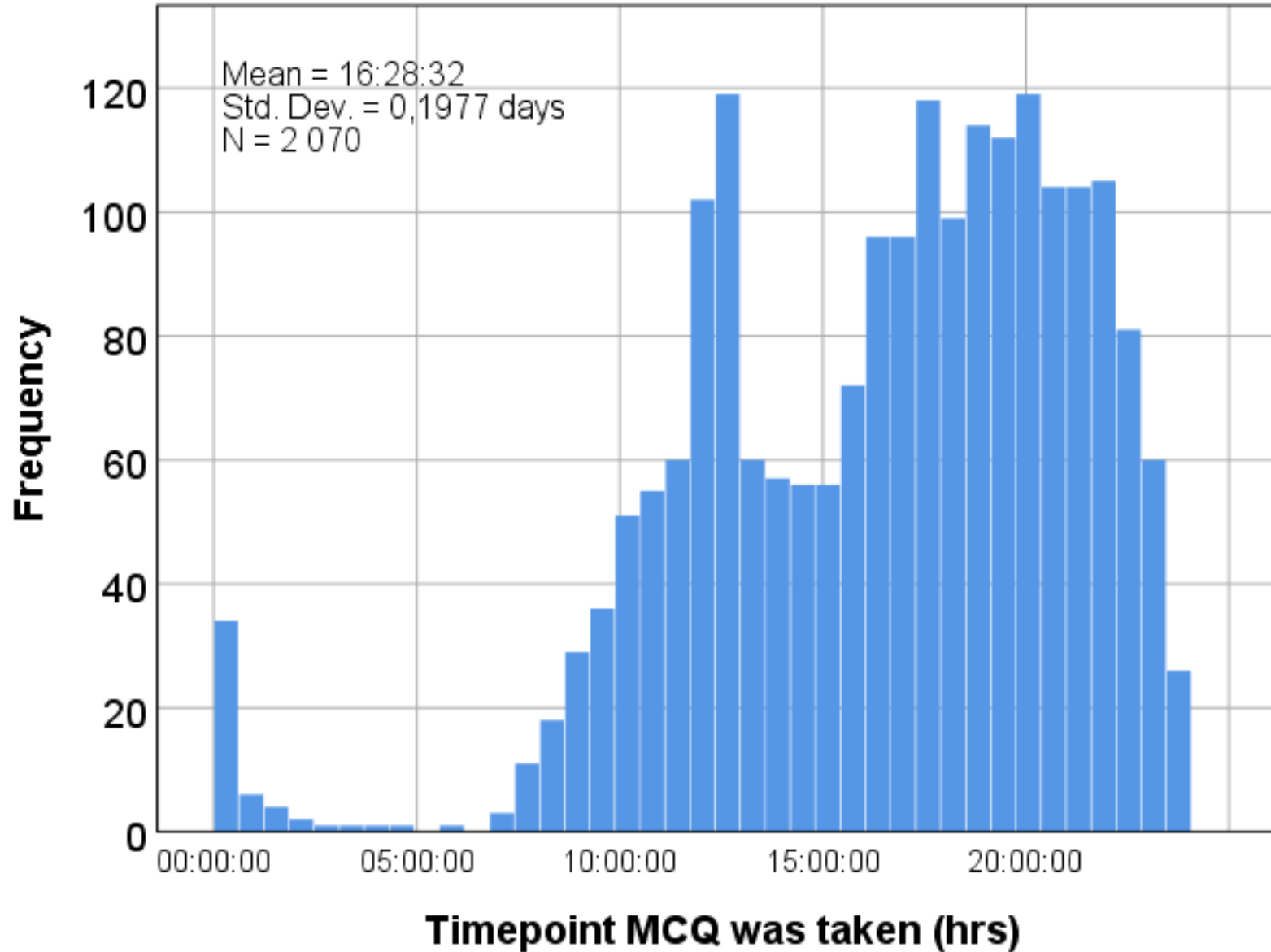


→adequate level of difficultness

Did the student use the MCQ?

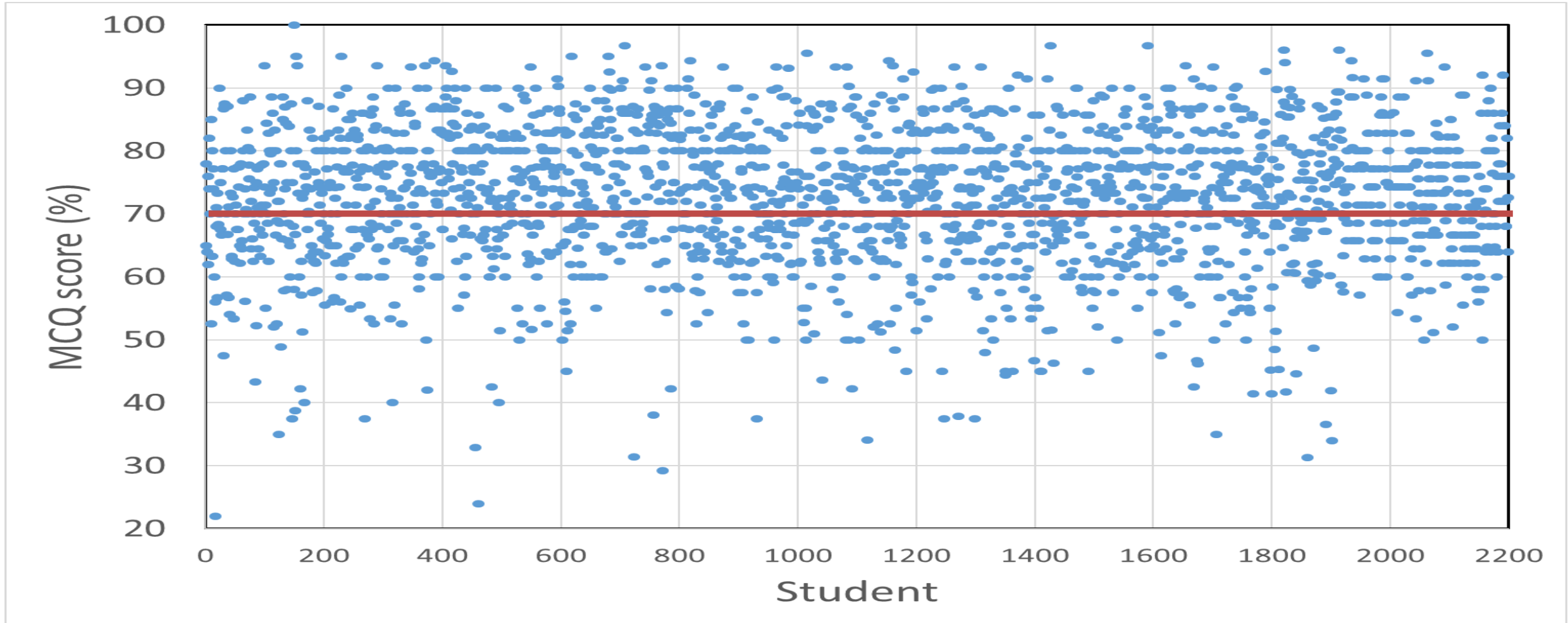


→ students took the MCQ on average **3.9 times**



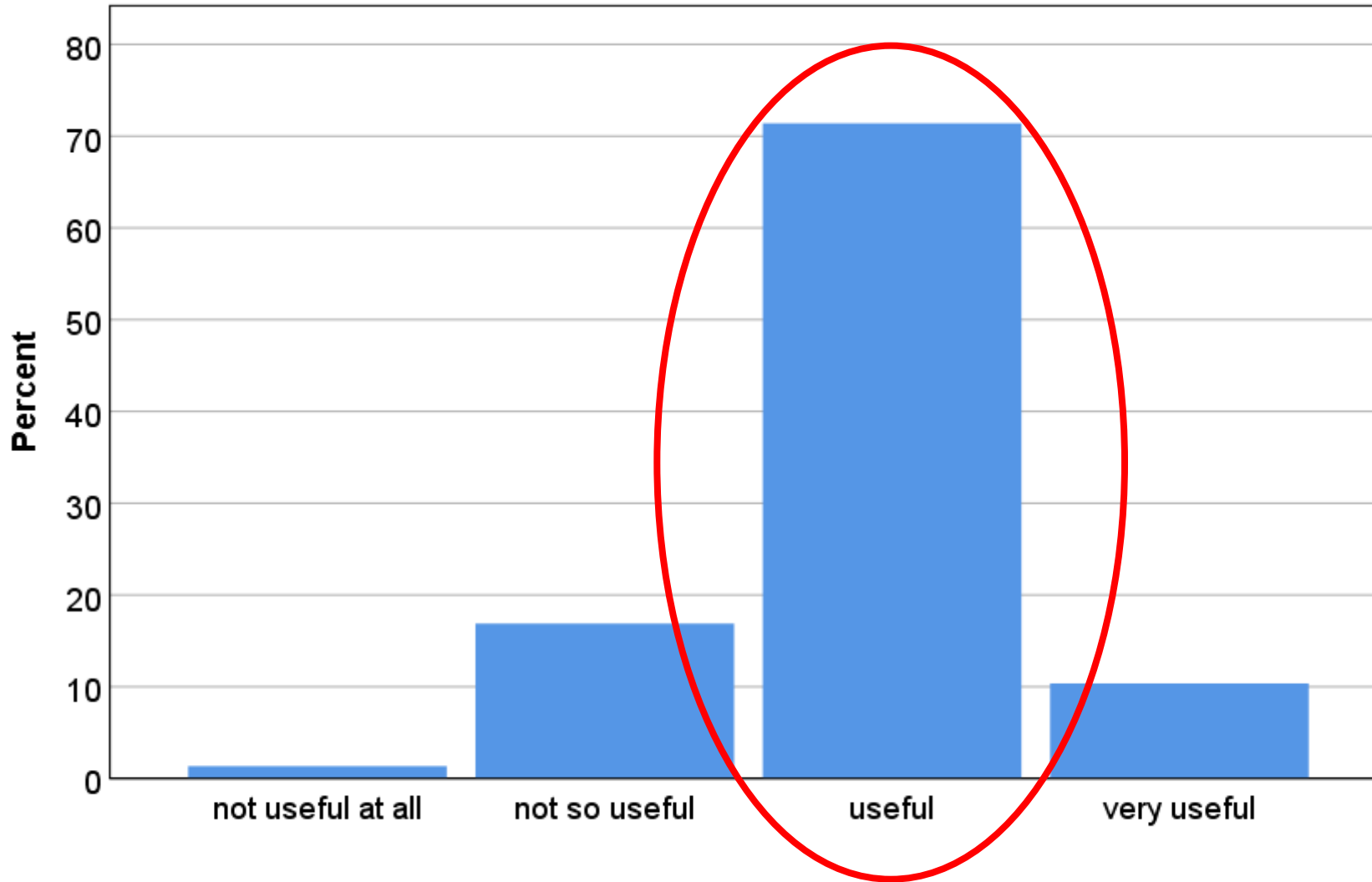
→students only inactive from 01:00-05:30!

MCQ score per student

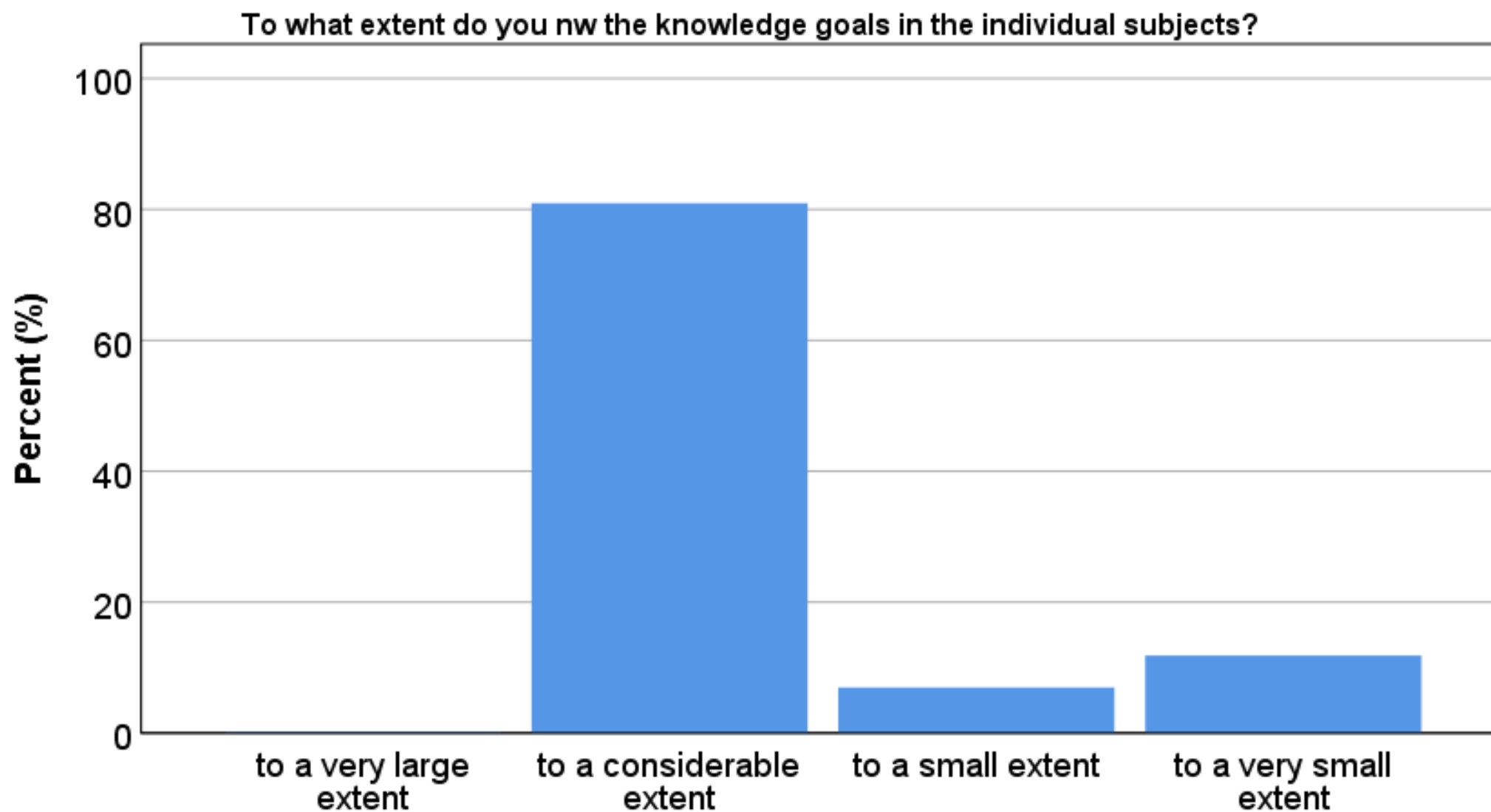


→ most student retook MCQ even after obtaining 70%

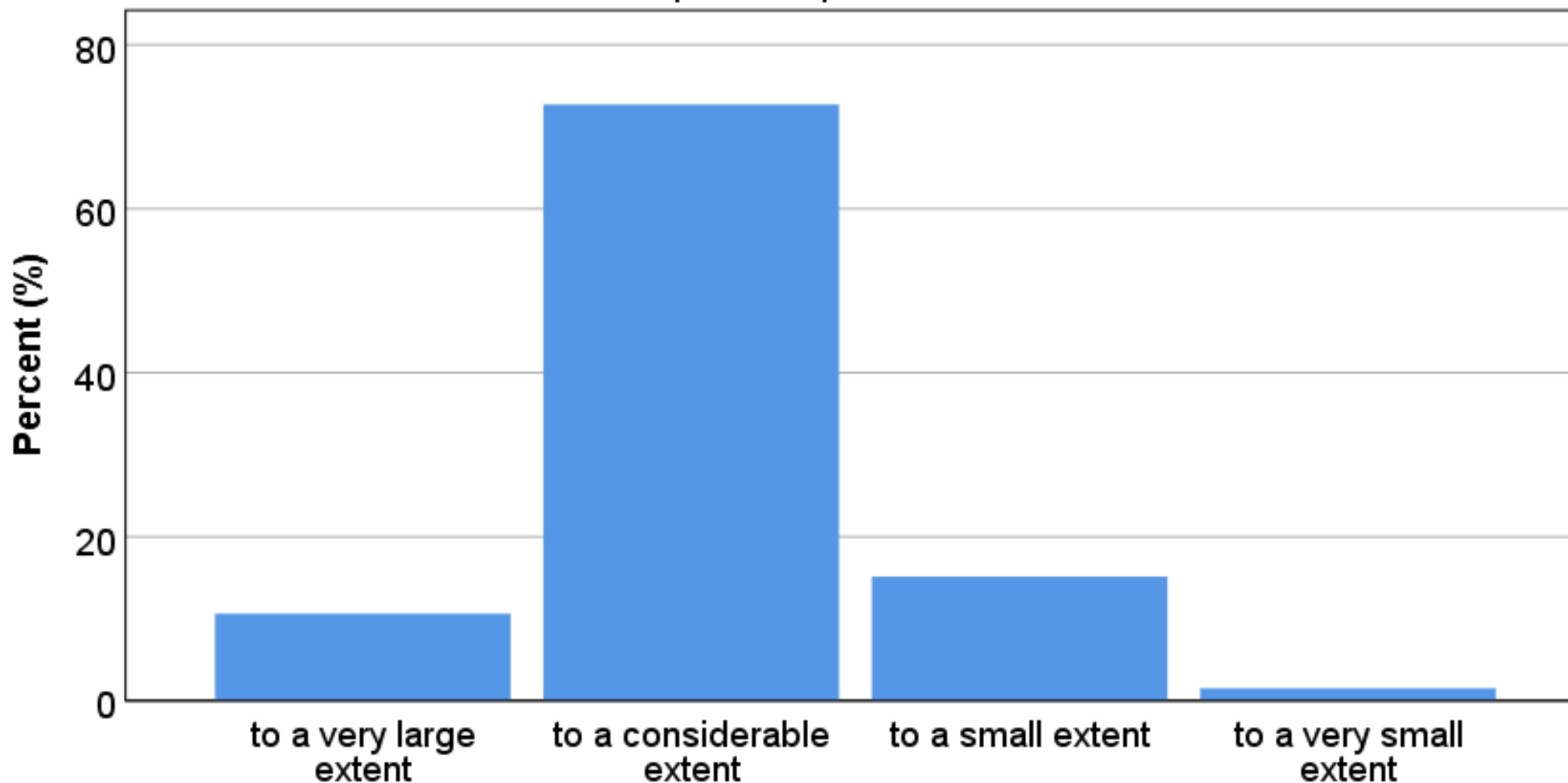
Did the student find MCQ useful?

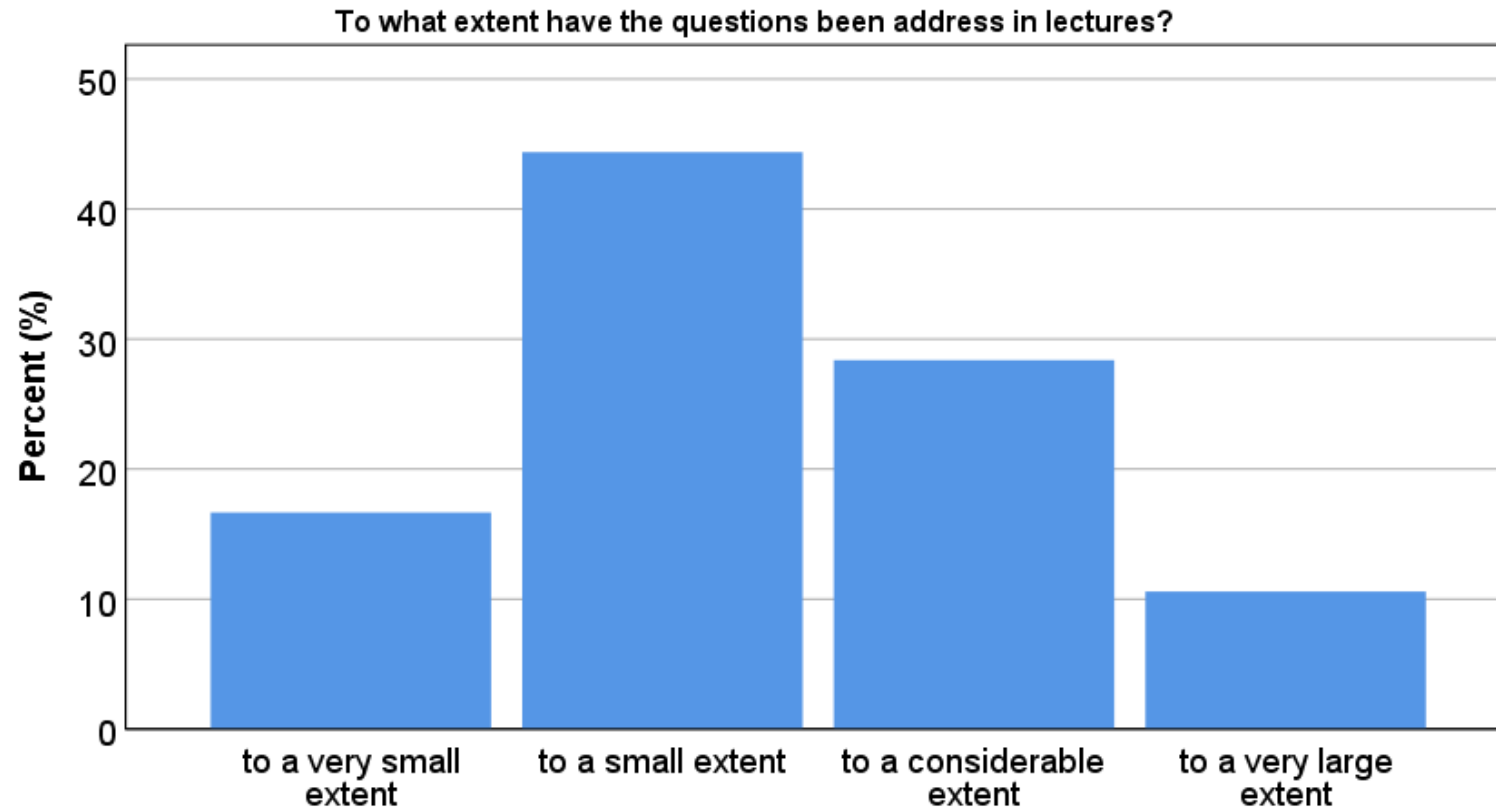


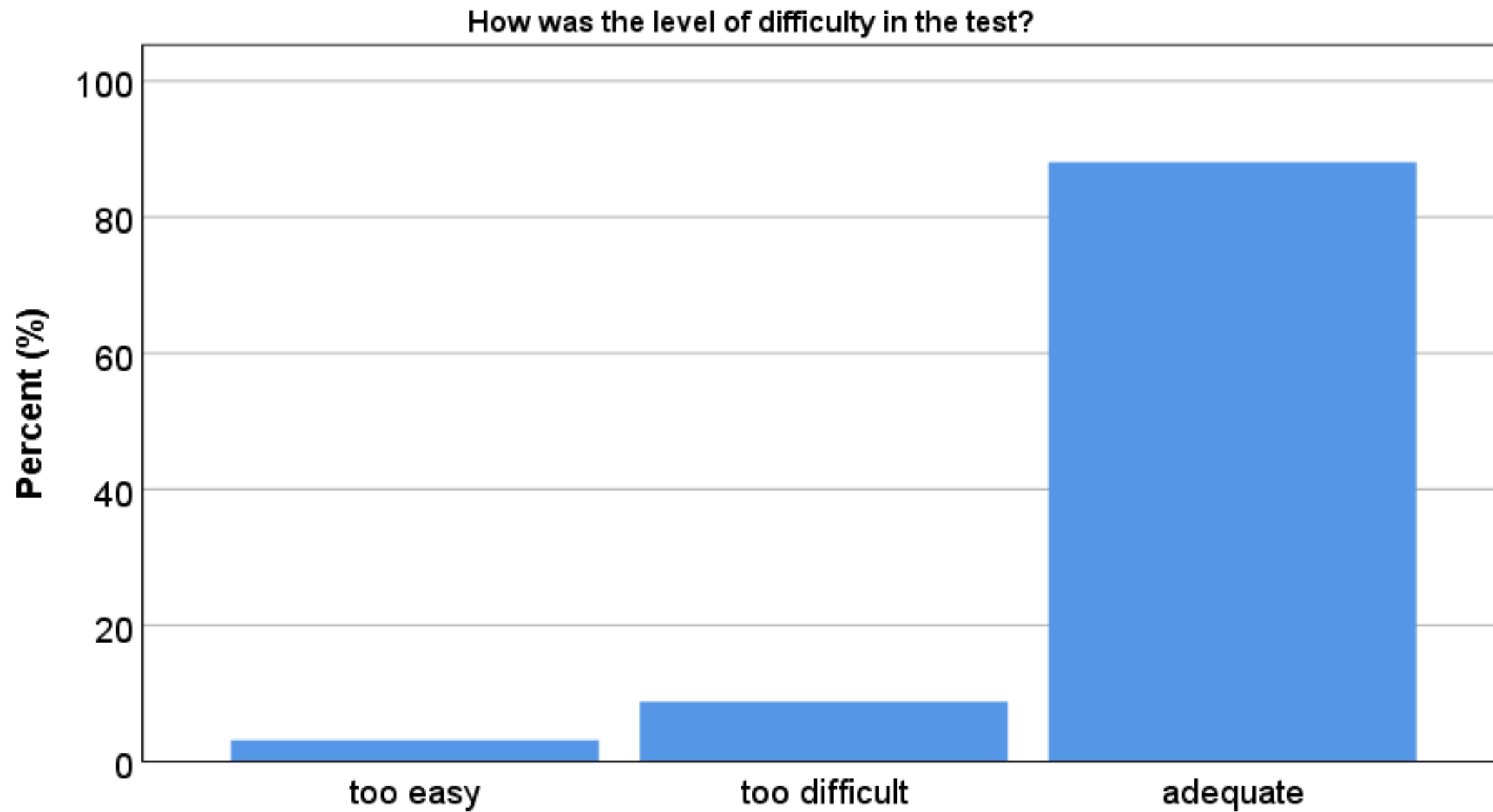
	How useful is such an MCQ test?
Semester	-0.114**
Time MCQ	0.029
Percent MCQ	0.083*
Number Of MCQ	-0.009



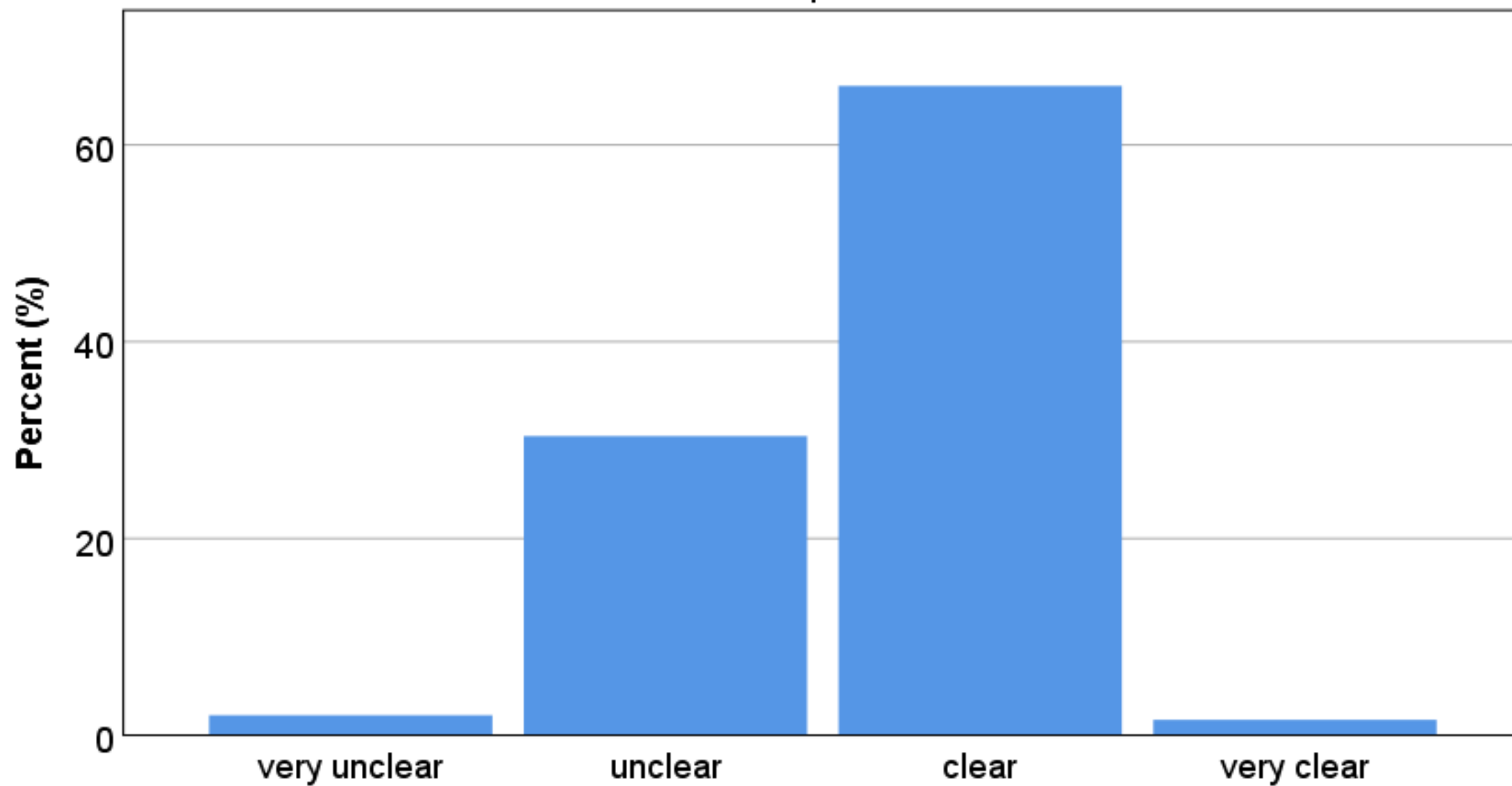
To what extent do you know the questions in the multiple-choice test from the knowledge goals, please refer to the previous question?



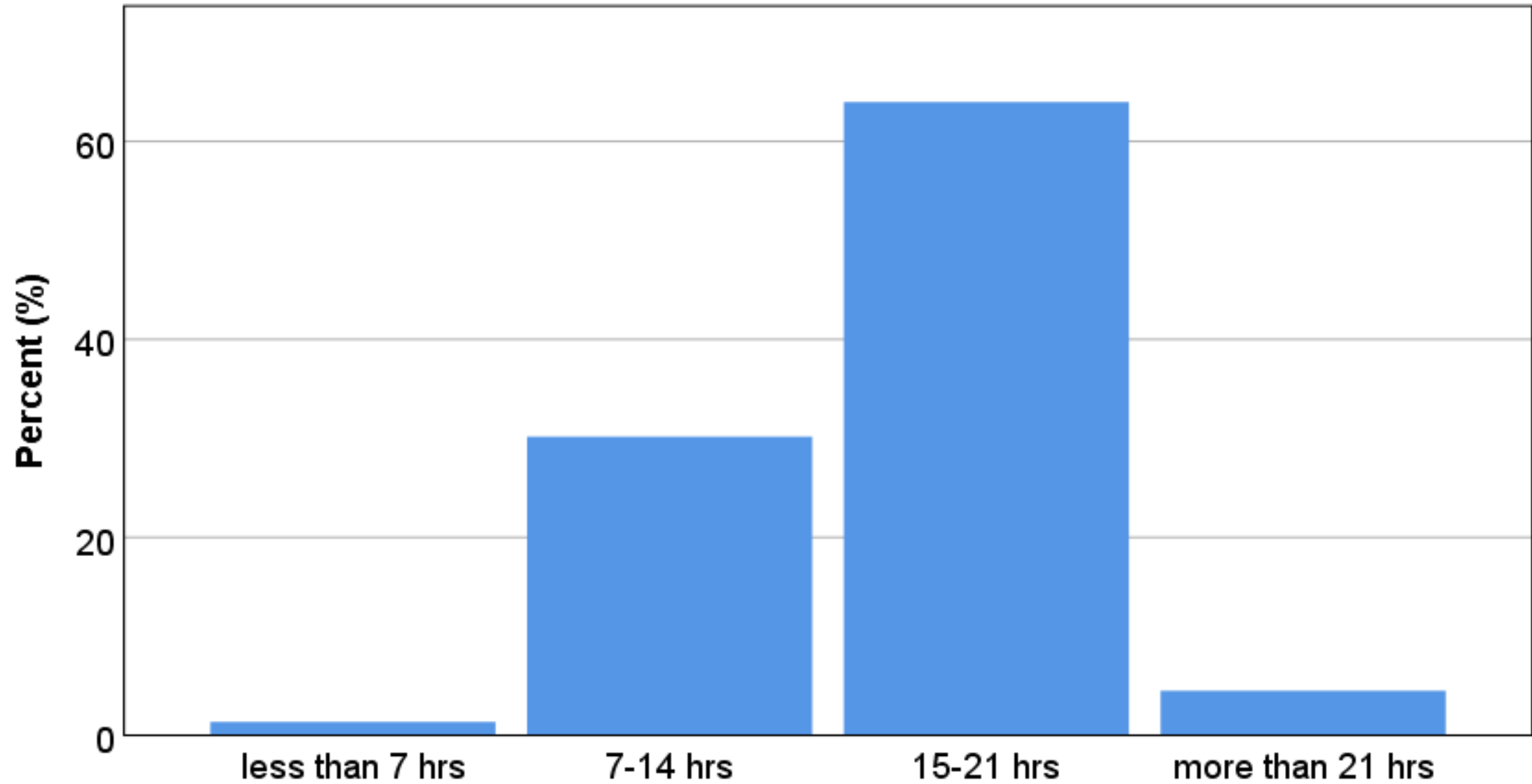


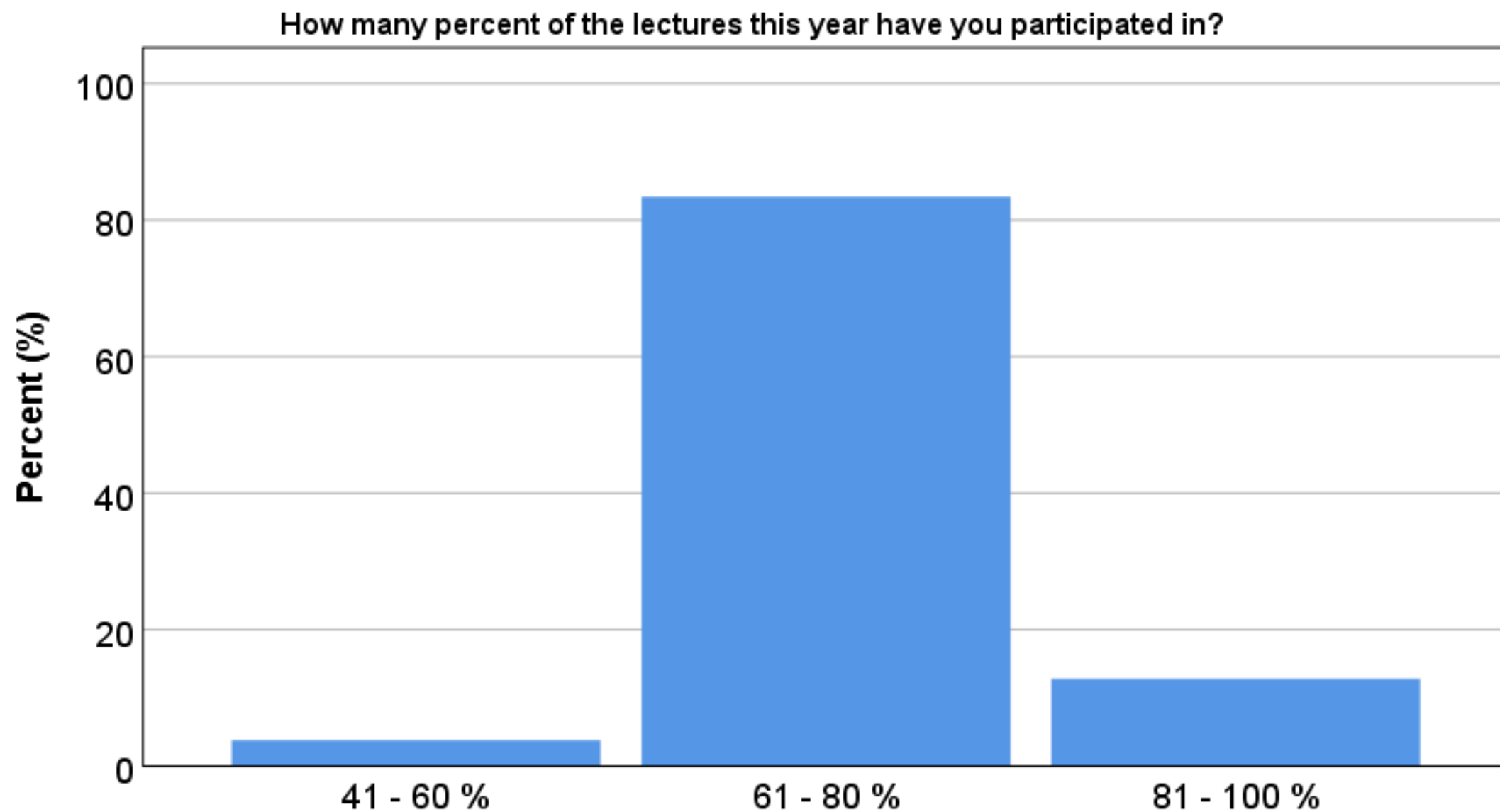


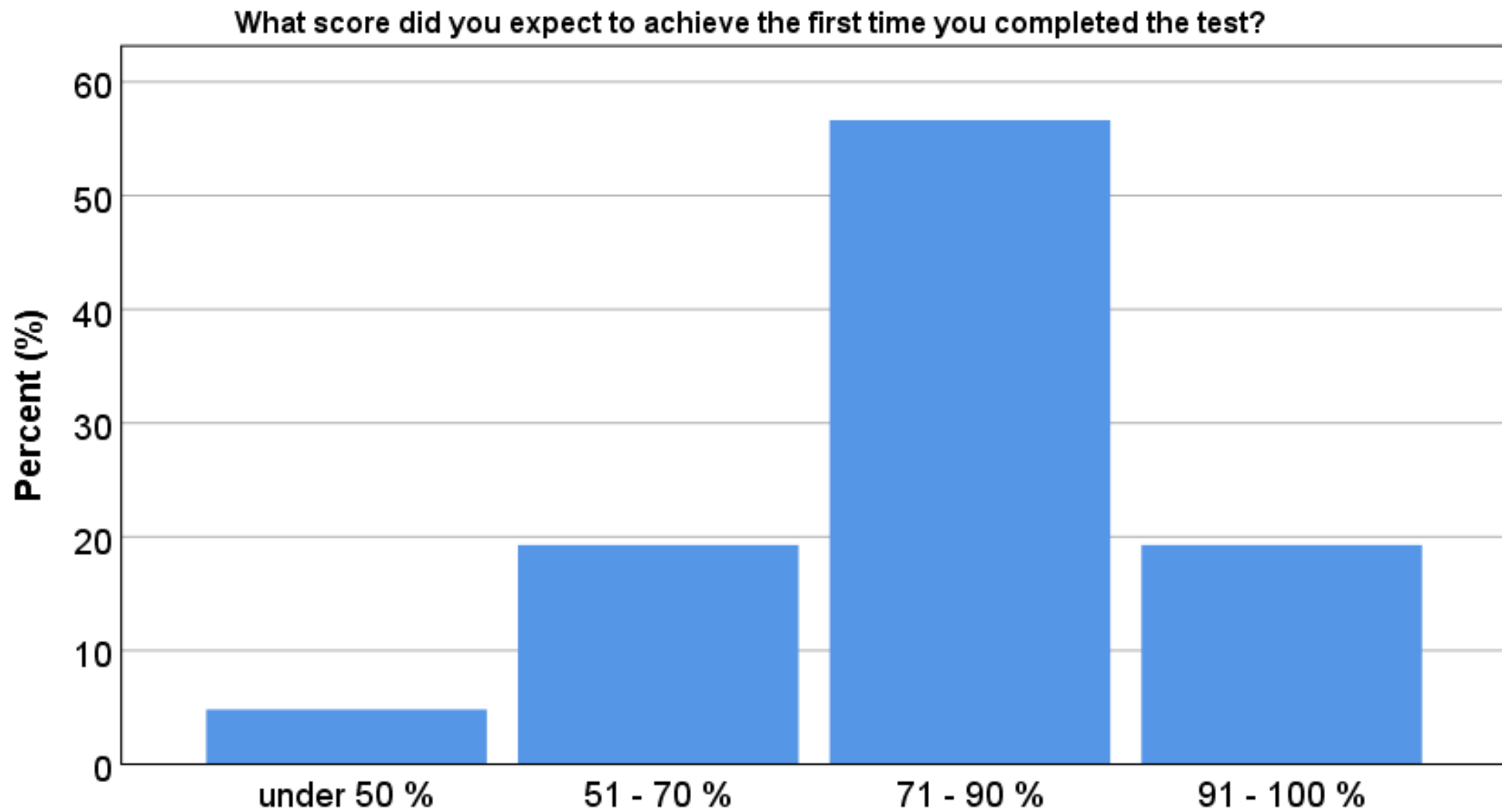
How clear were the different questions formulated?



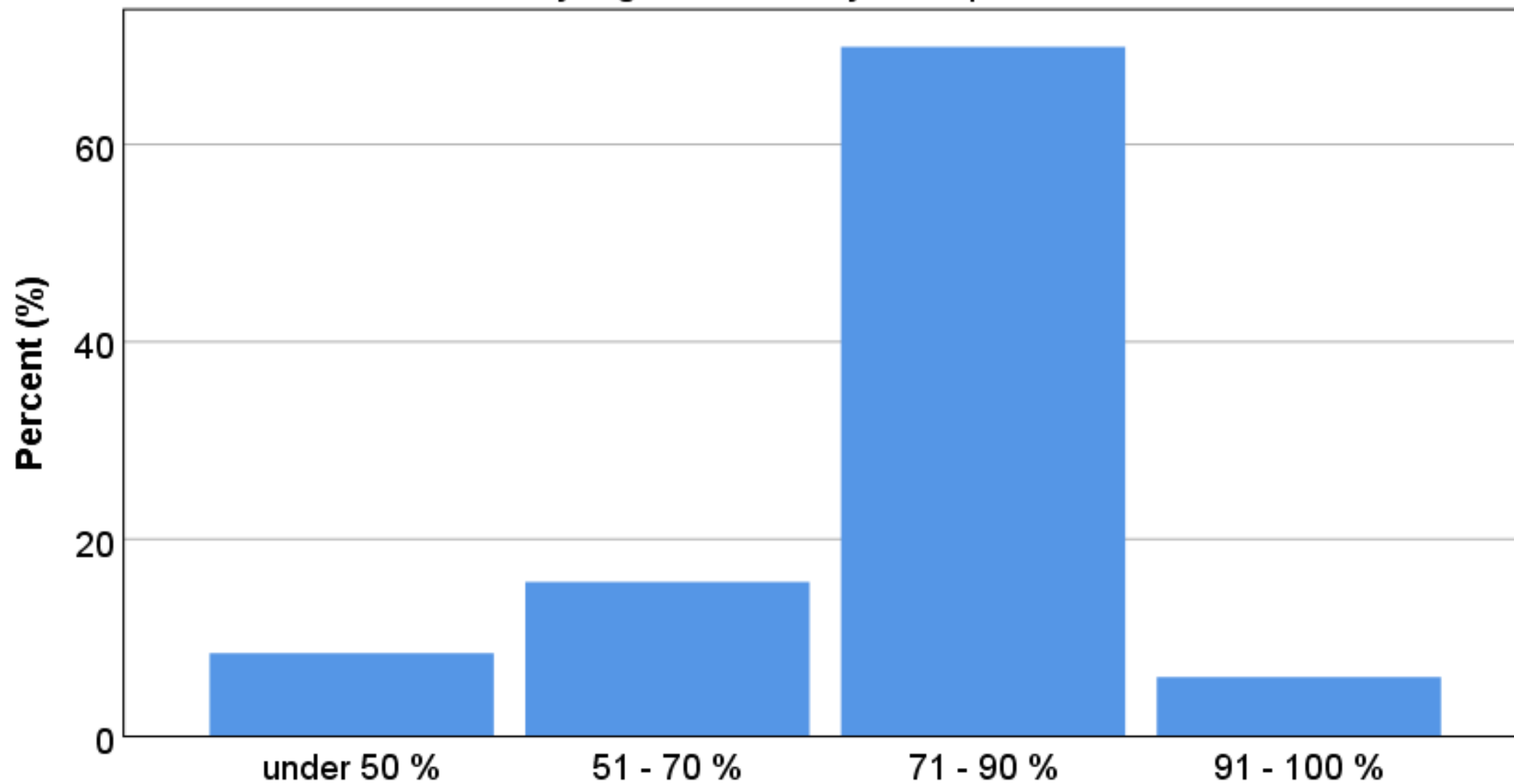
How many hours do you use to read / study on your own during the week?

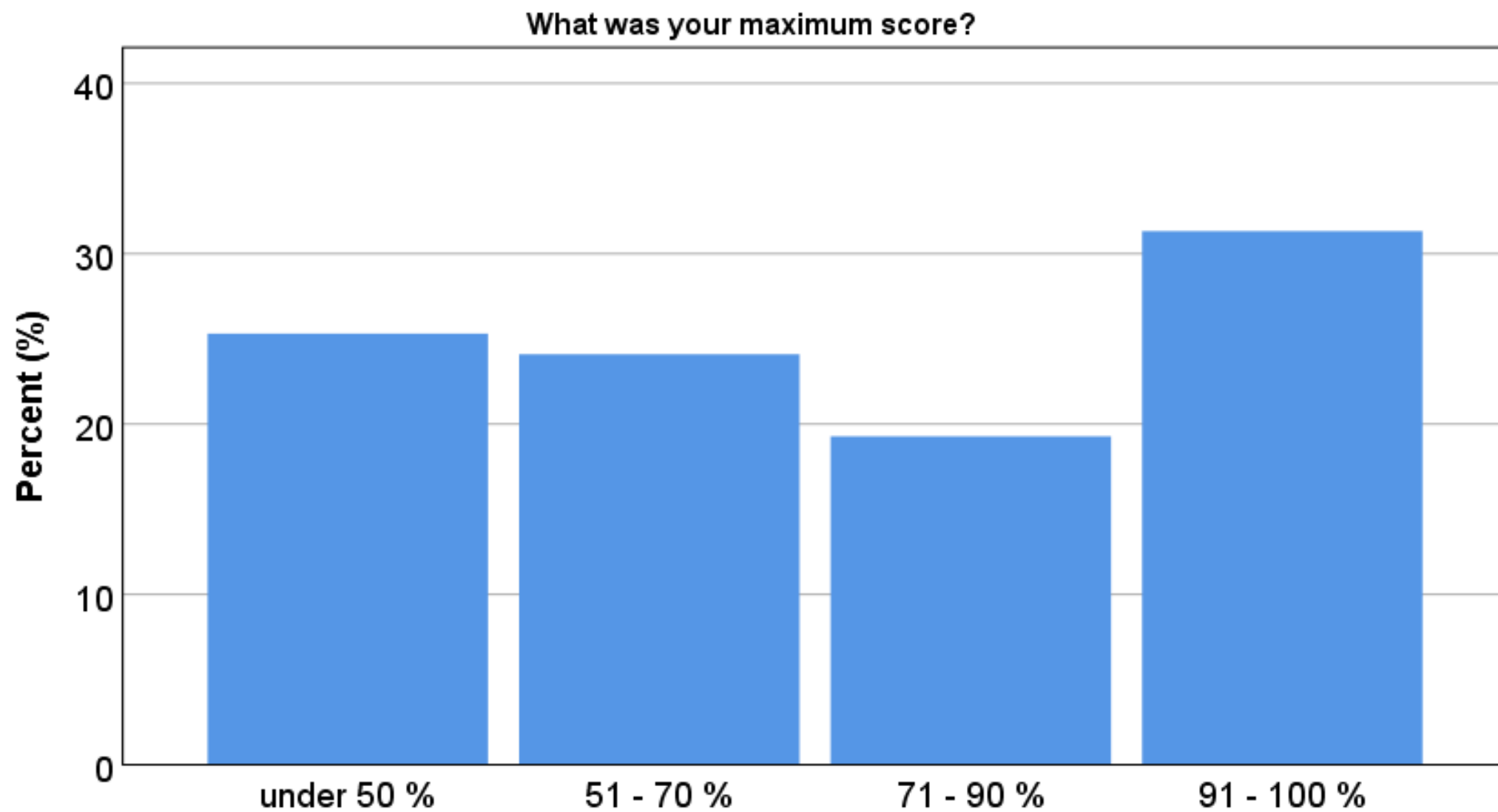




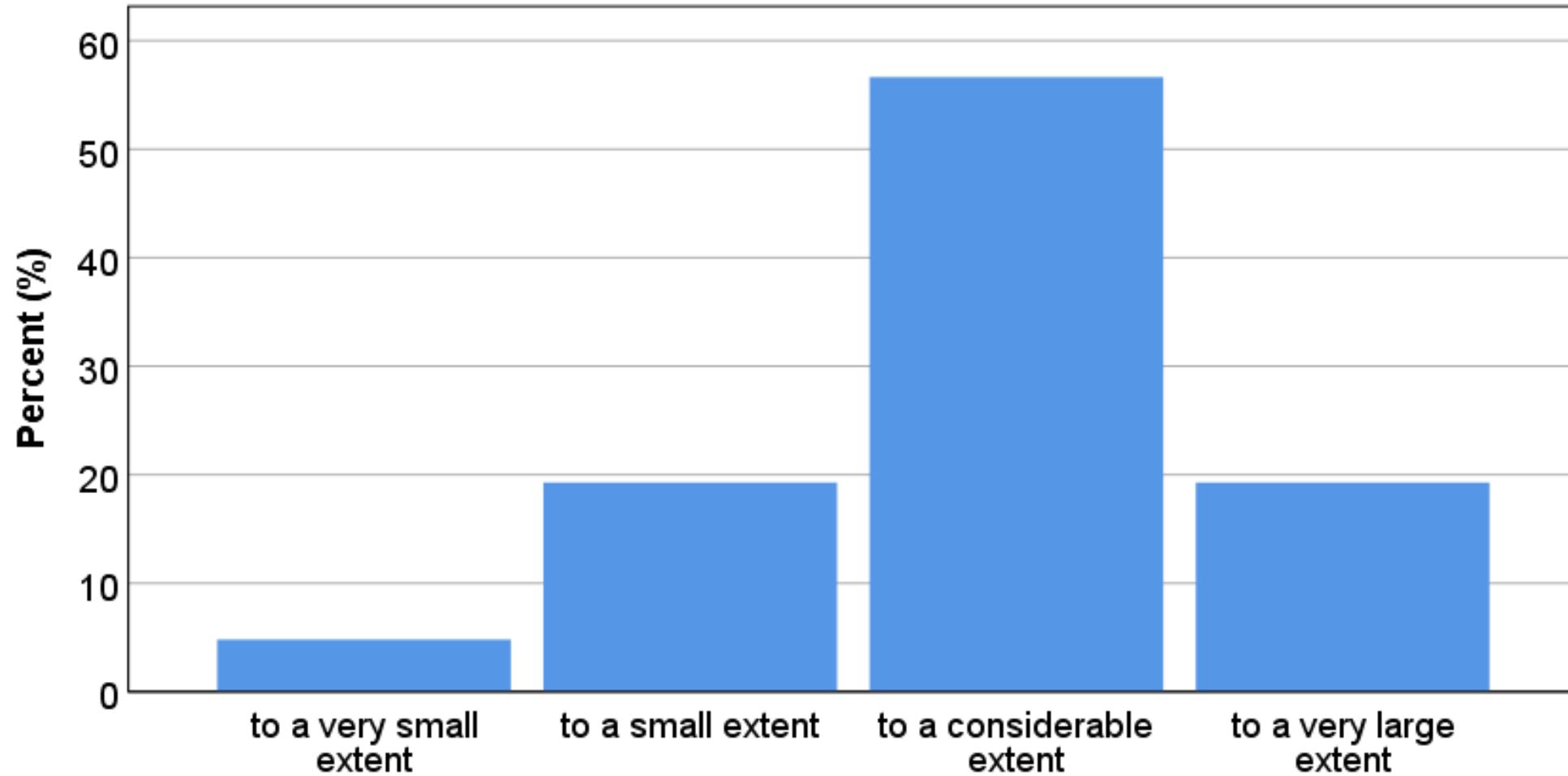


What score did you get the first time you completed the test?

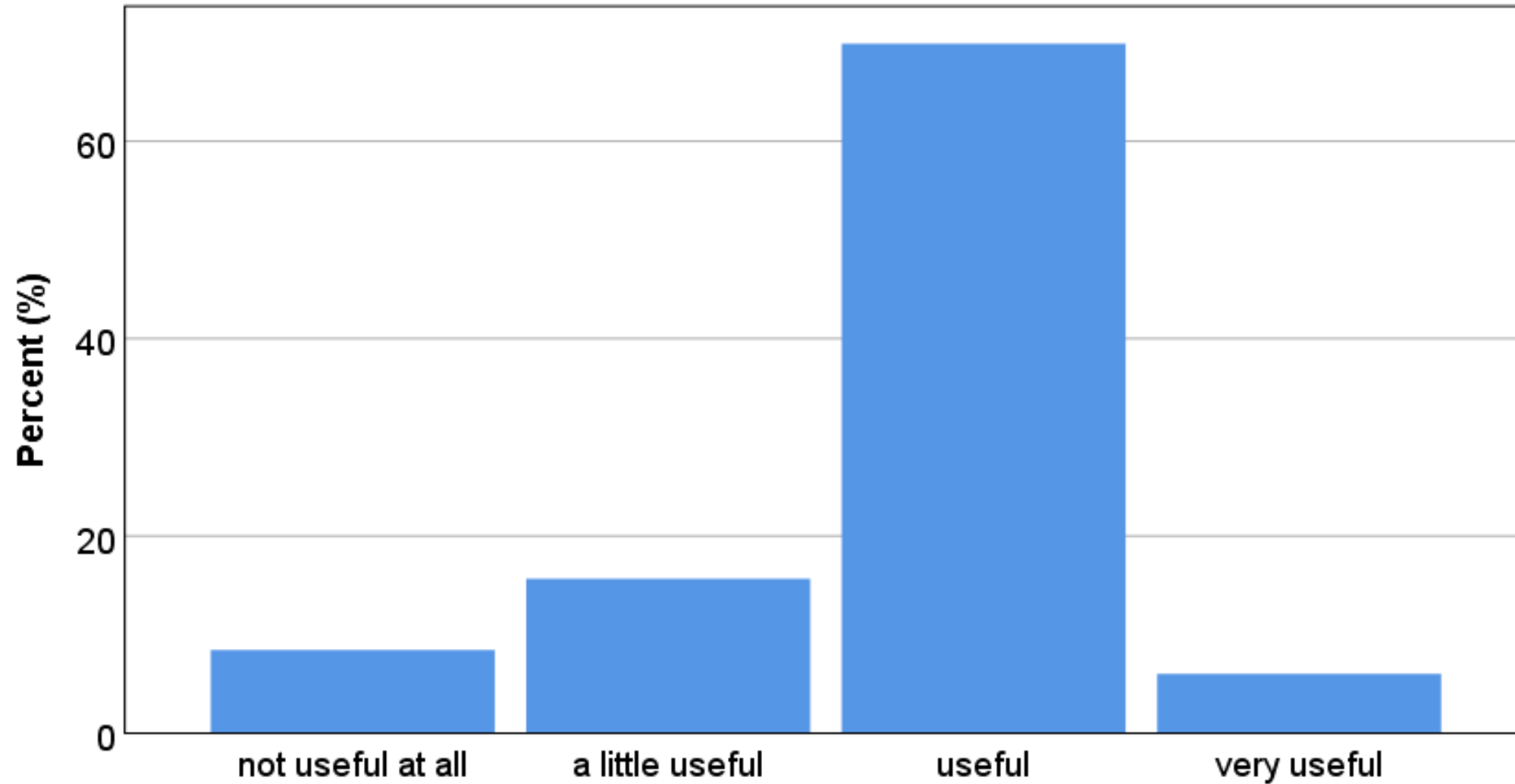




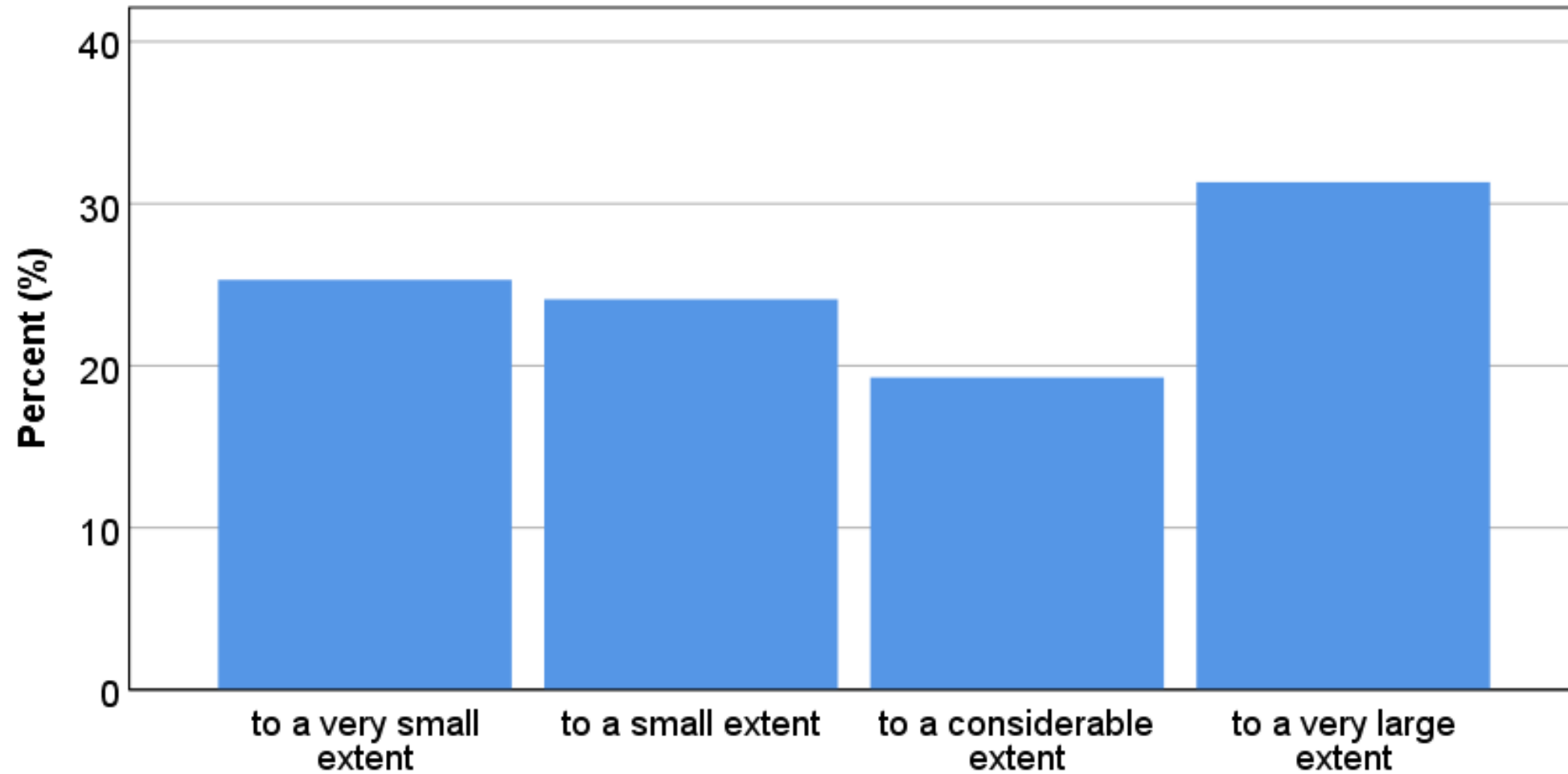
To what extent have the MCQ tests led you into lecture notes / textbooks and checked questions you have been unsure about?



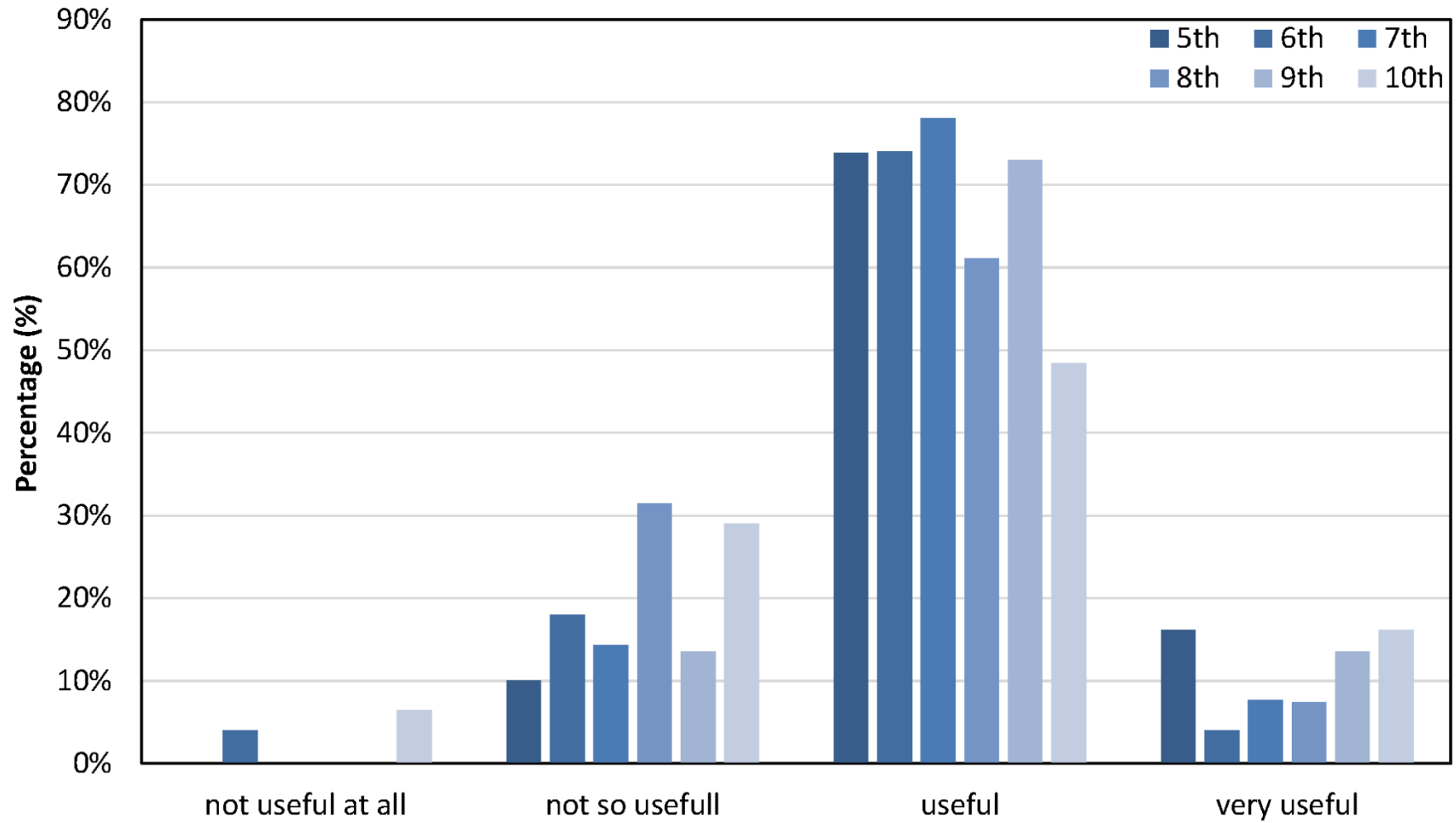
How useful do you think it is to have an MCQ test in the middle of the 10th semester?



To what extent have the MCQ tests that were added in the middle of each semester meant that you have started reading / exam preparation earlier than you would otherwise have done?

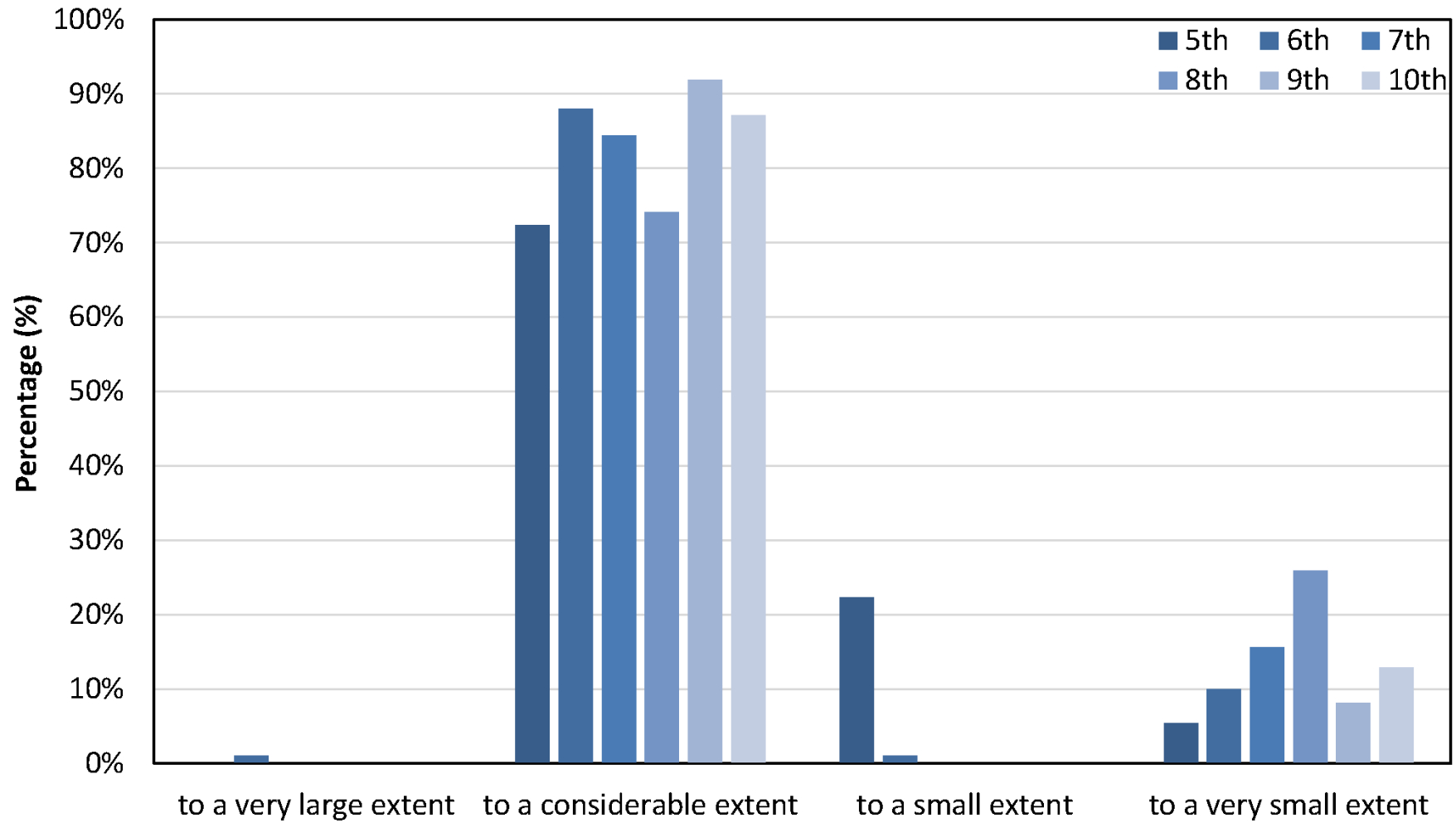


How useful is such an MCQ test?



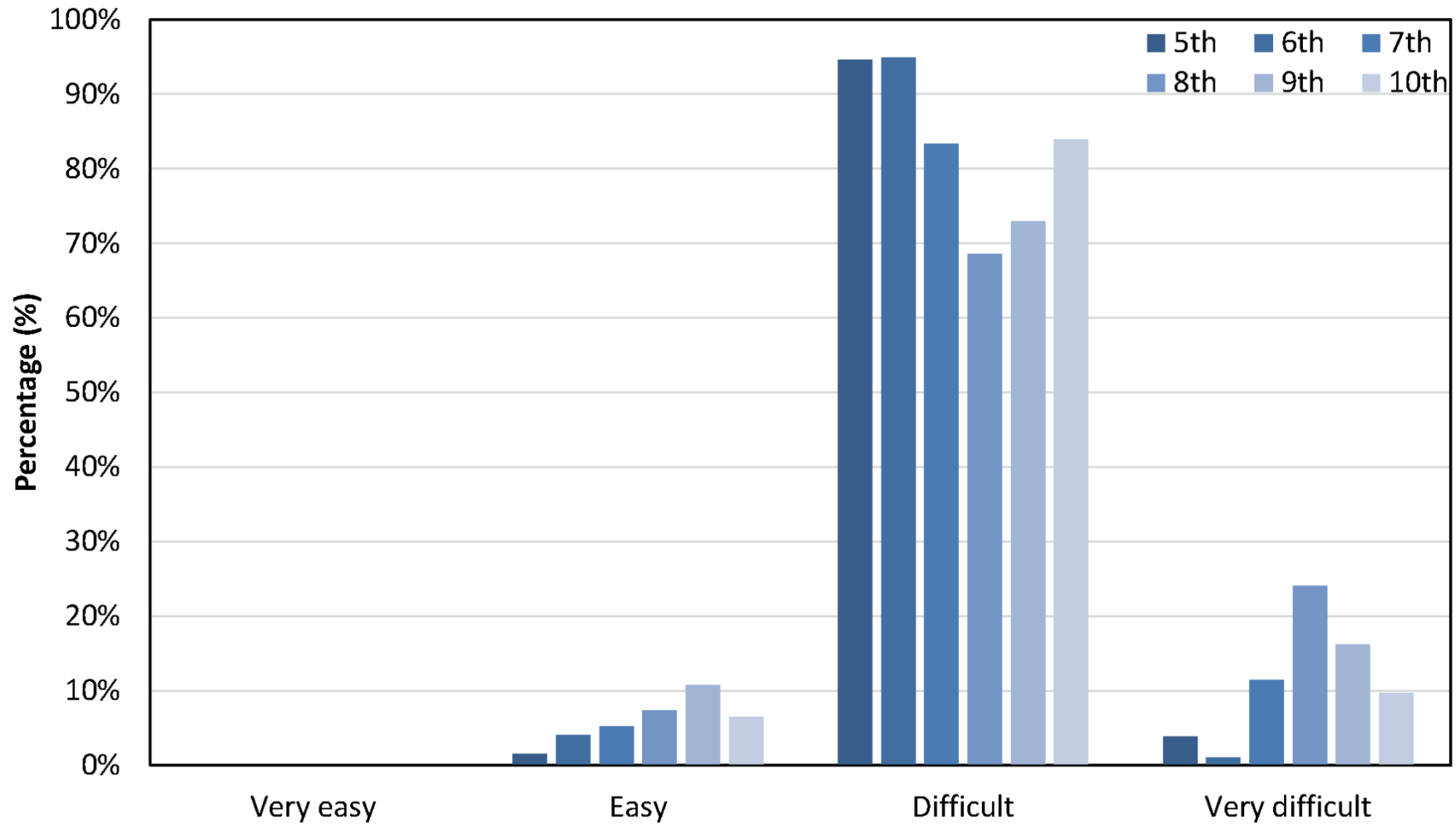
n = 461

To what extent do you know the knowledge goals in the individual subjects?



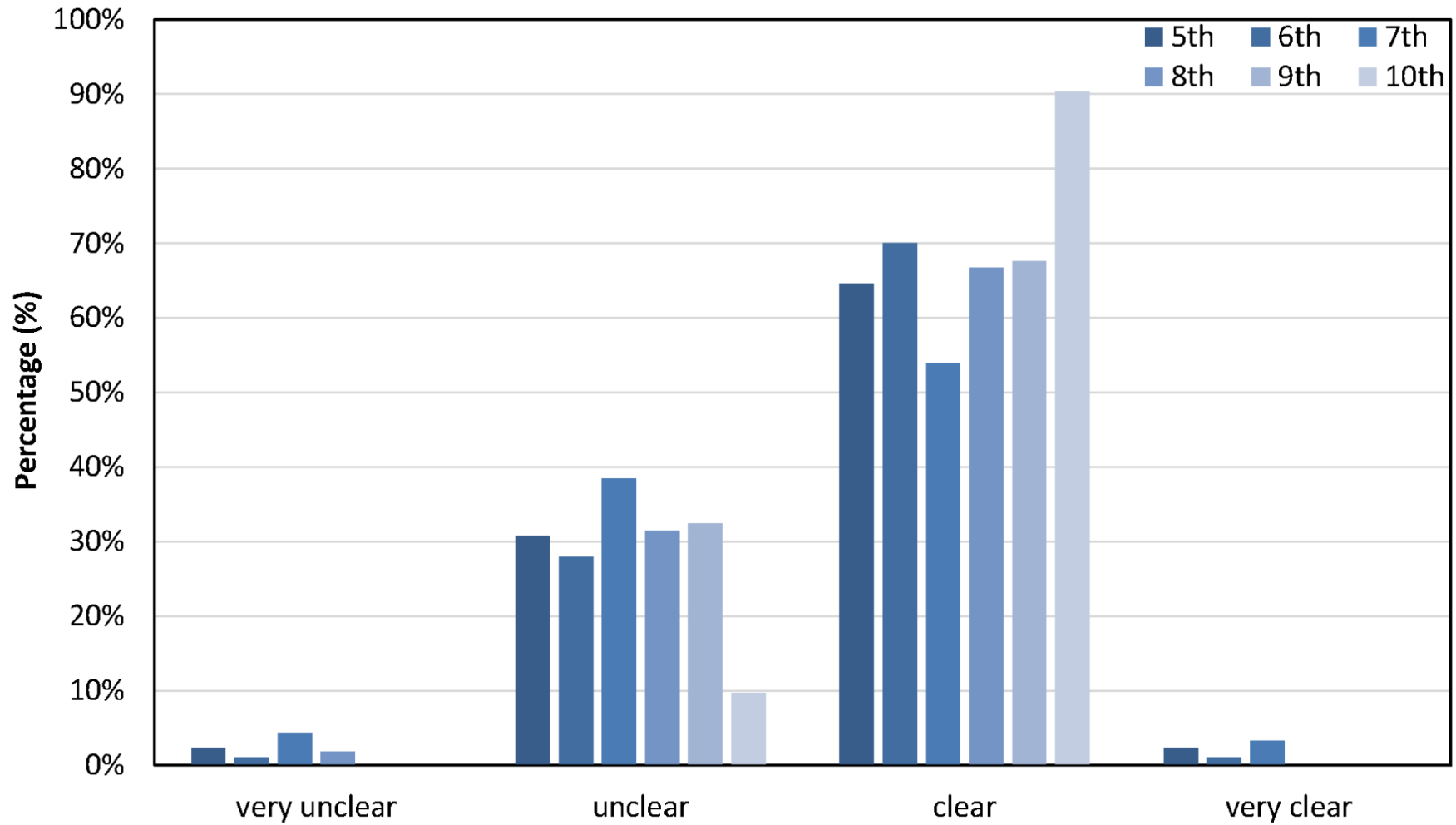
n = 461

How was the level of difficulty in the test?

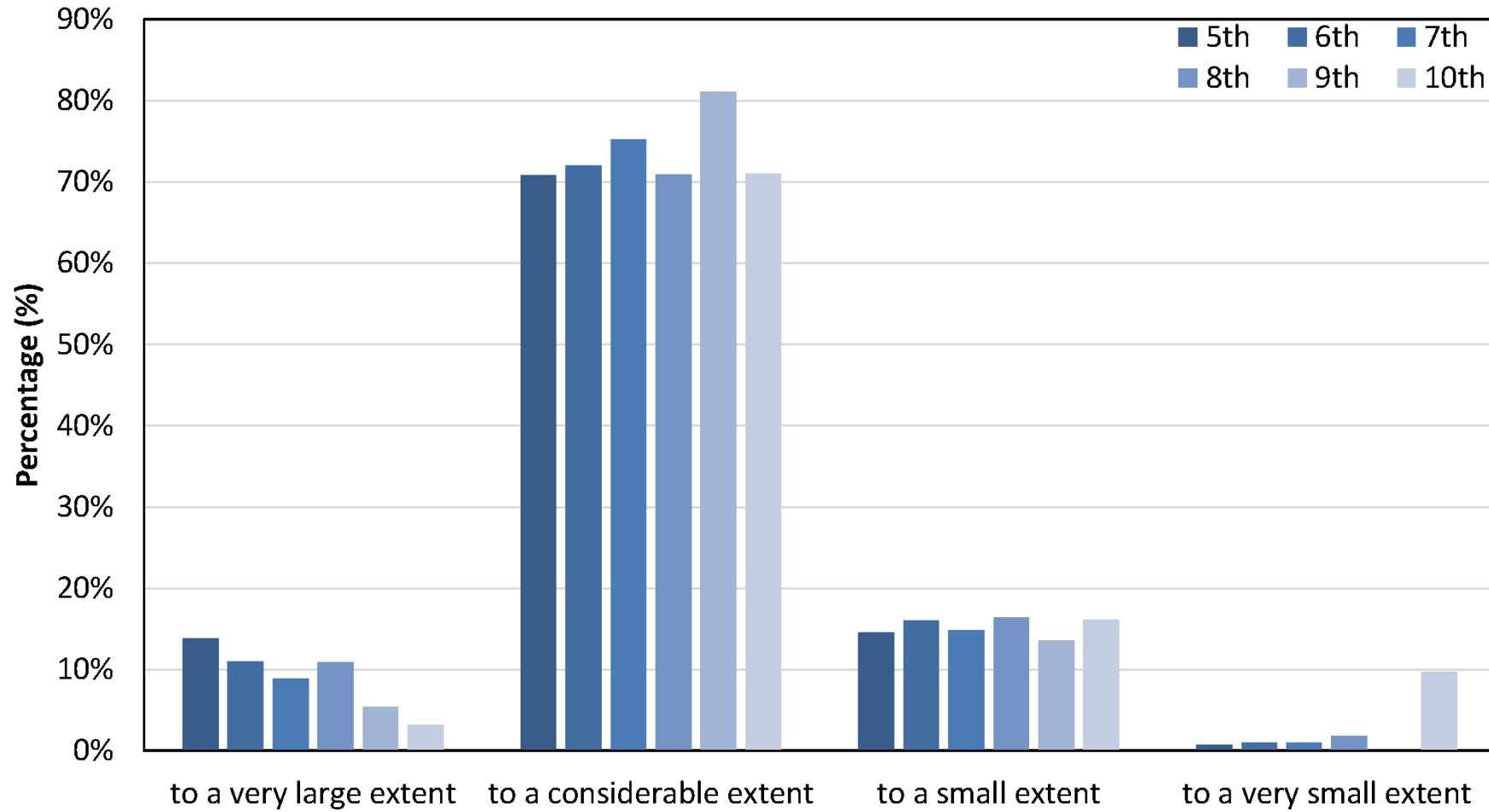


n = 461

How clear were the different questions formulated?

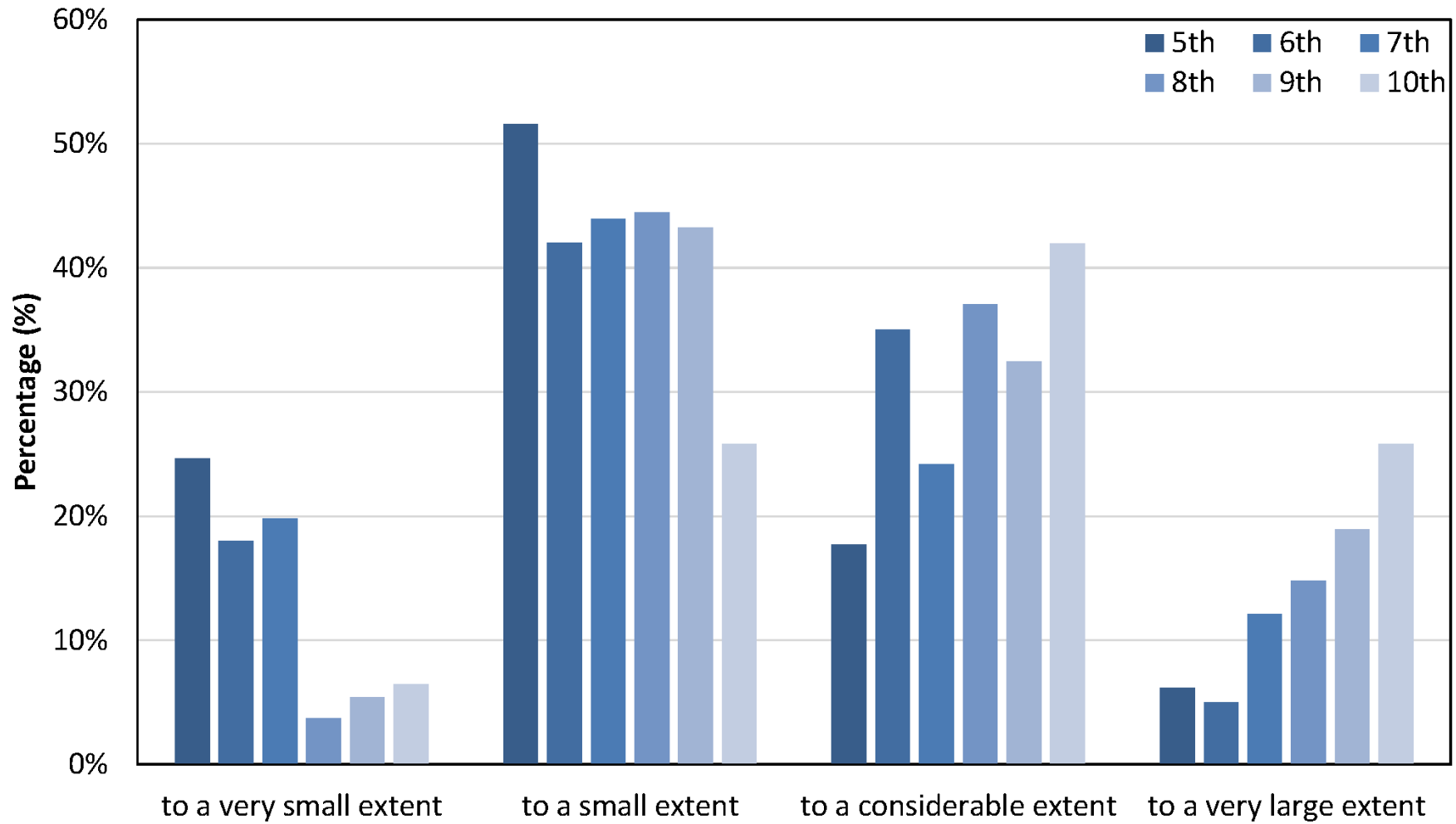


To what extent do you know the questions in the multiple-choice test from the knowledge goals, please refer to the previous question?



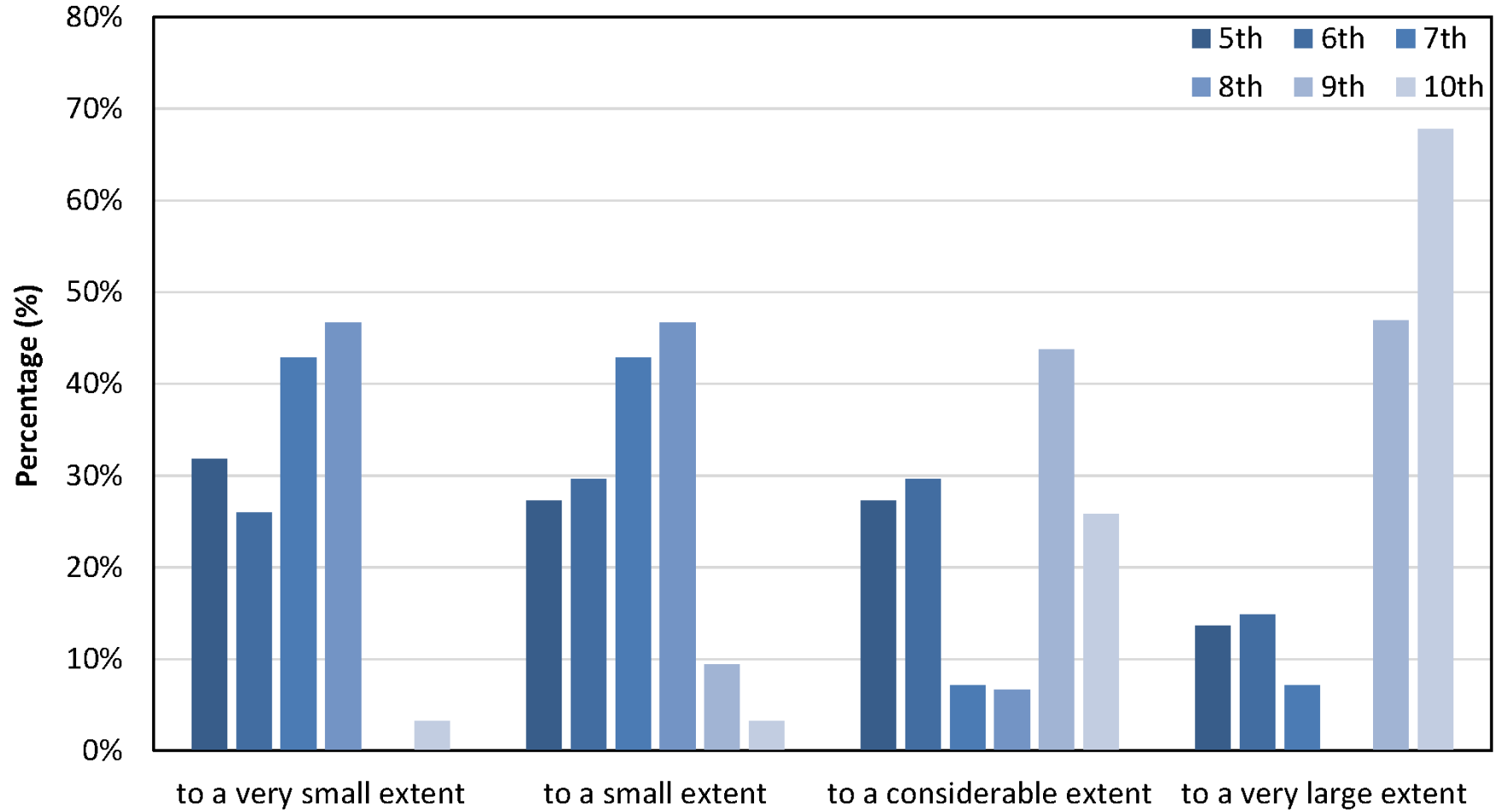
n = 461

To what extent have the questions been address in lectures?



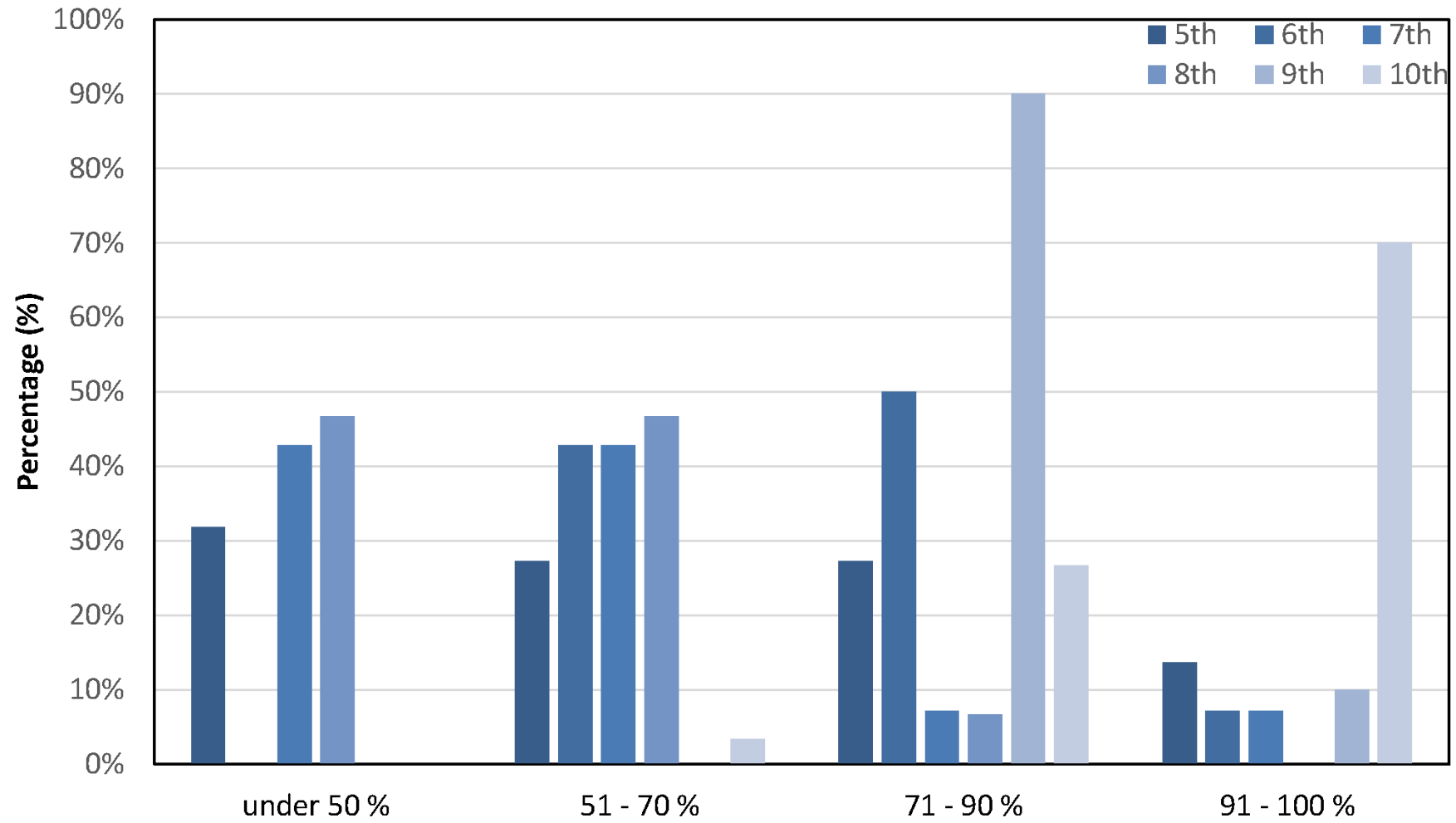
n = 461

To what extent have the MCQ tests that were added in the middle of each semester meant that you have started reading / exam preparation earlier than you would otherwise have done?



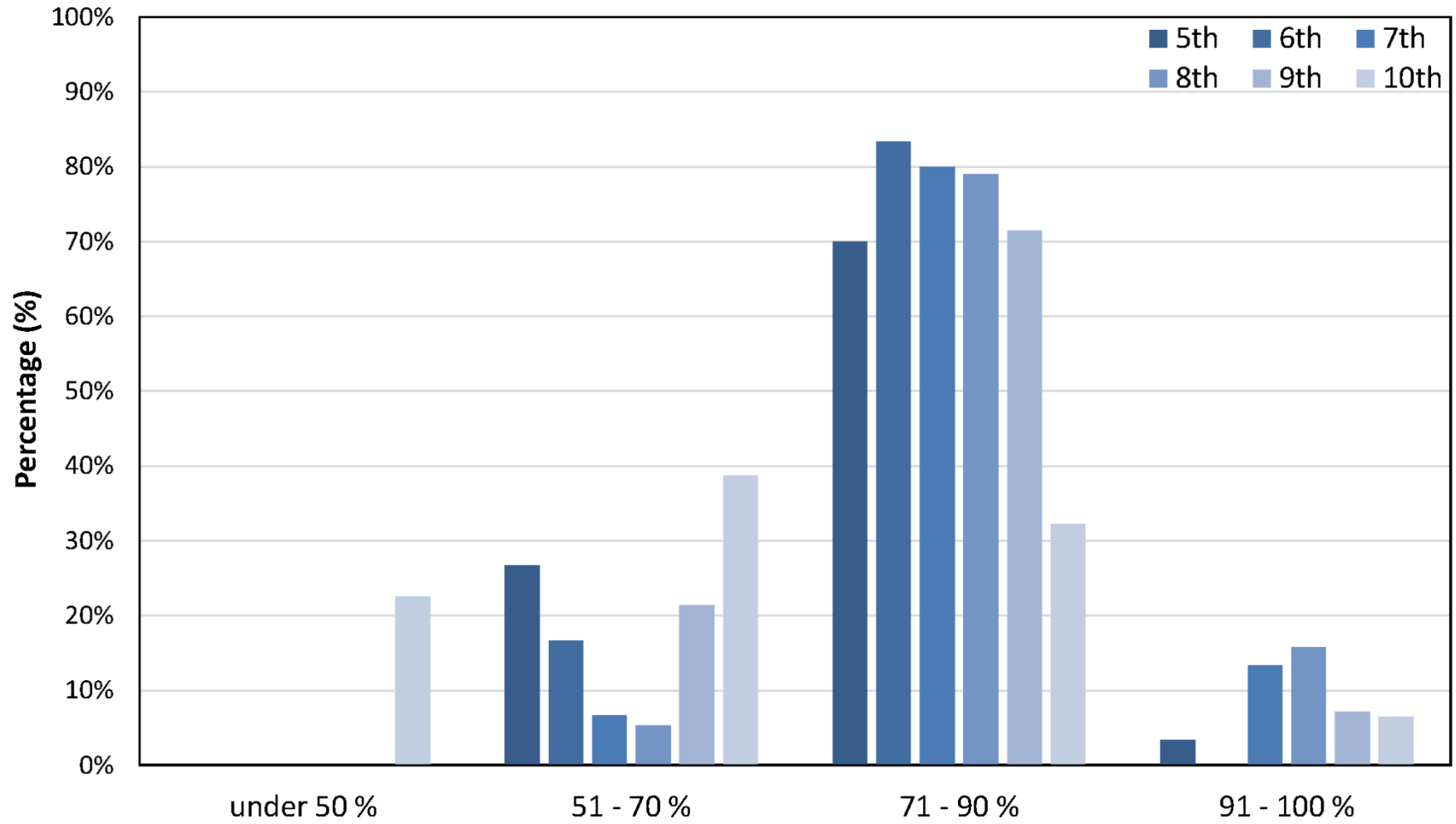
n = 461

What was your maximum score?



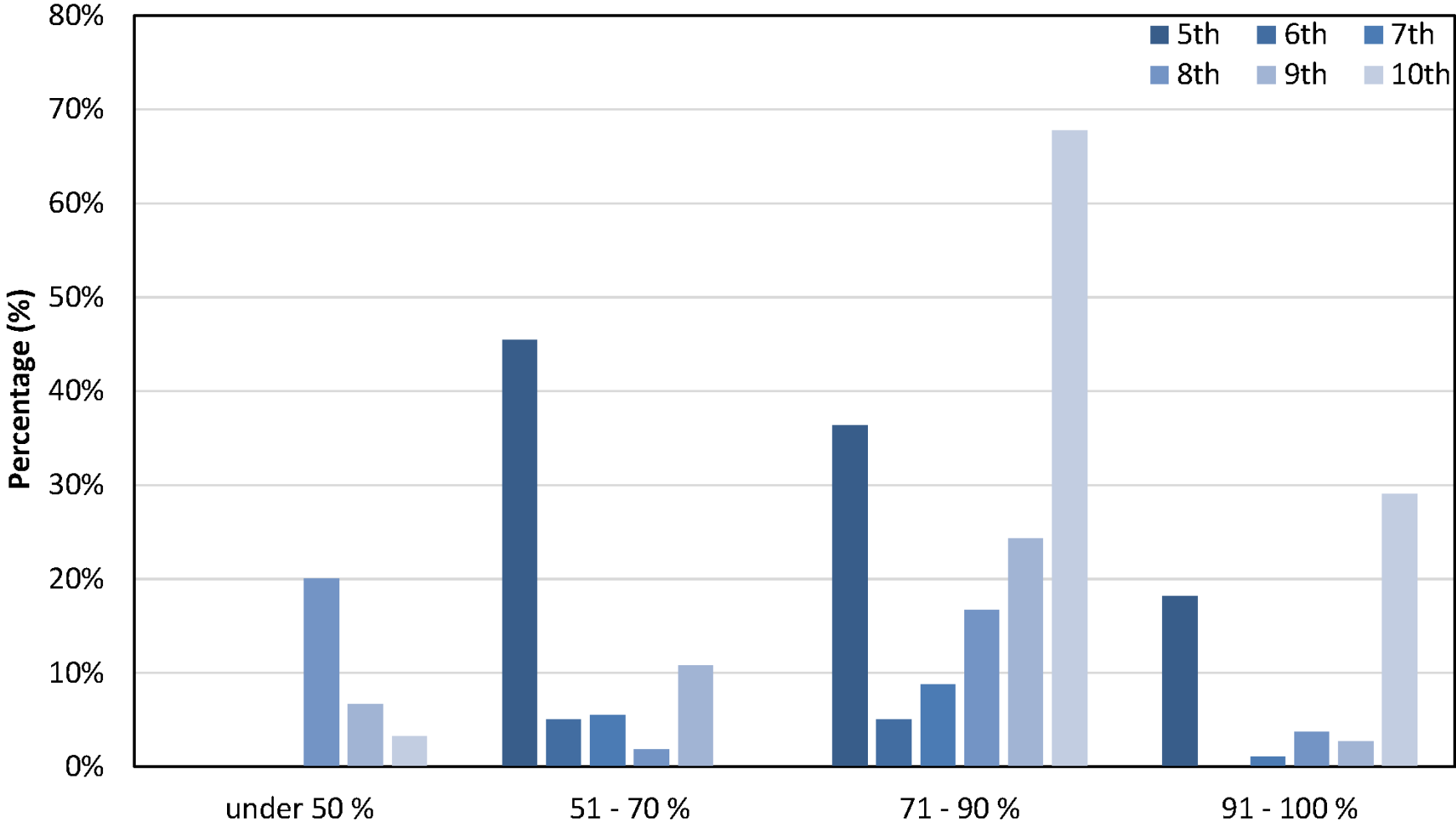
n = 461

What score did you get the first time you completed the test?

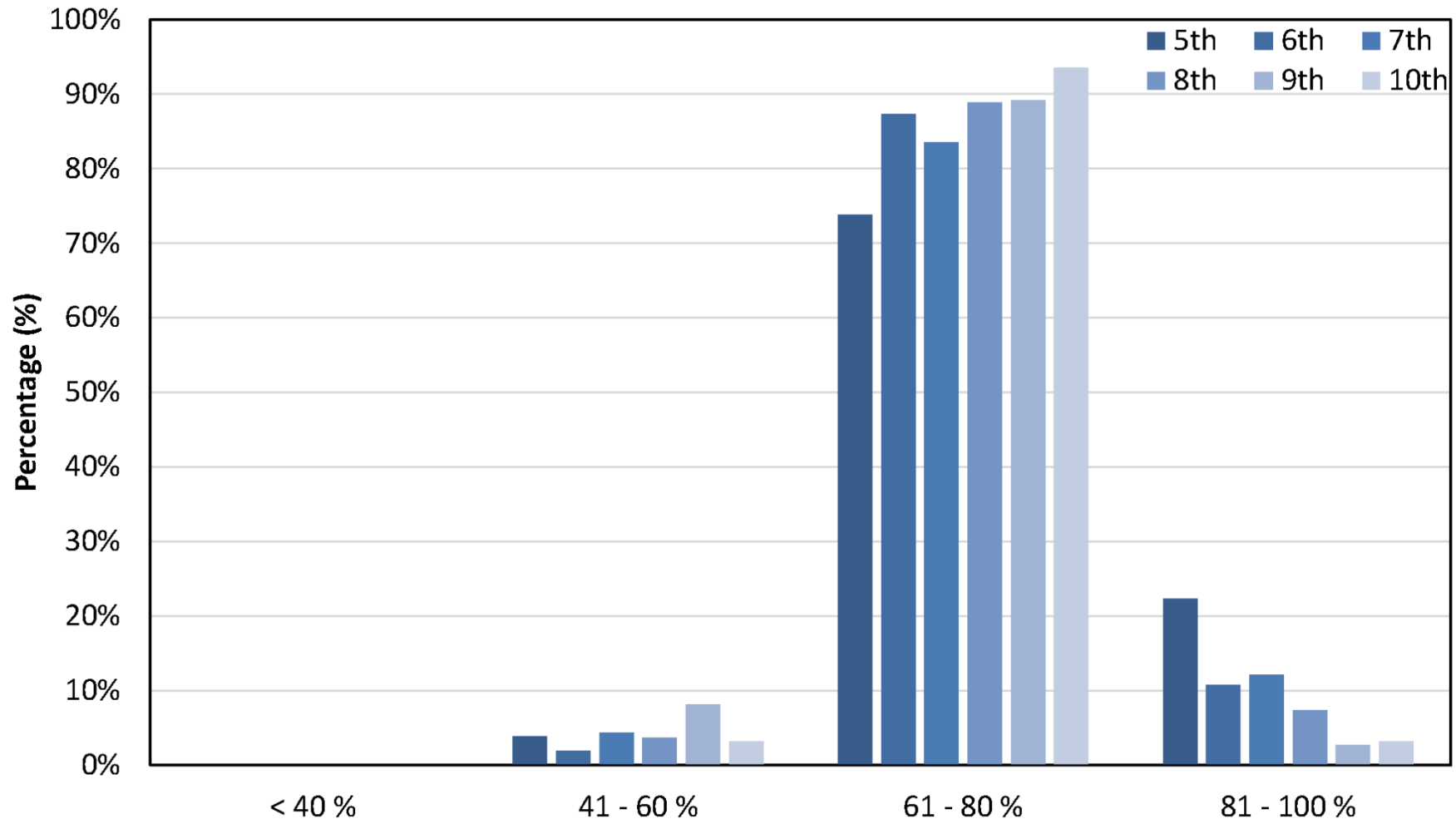


n = 461

What score did you expect to achieve the first time you completed the test?

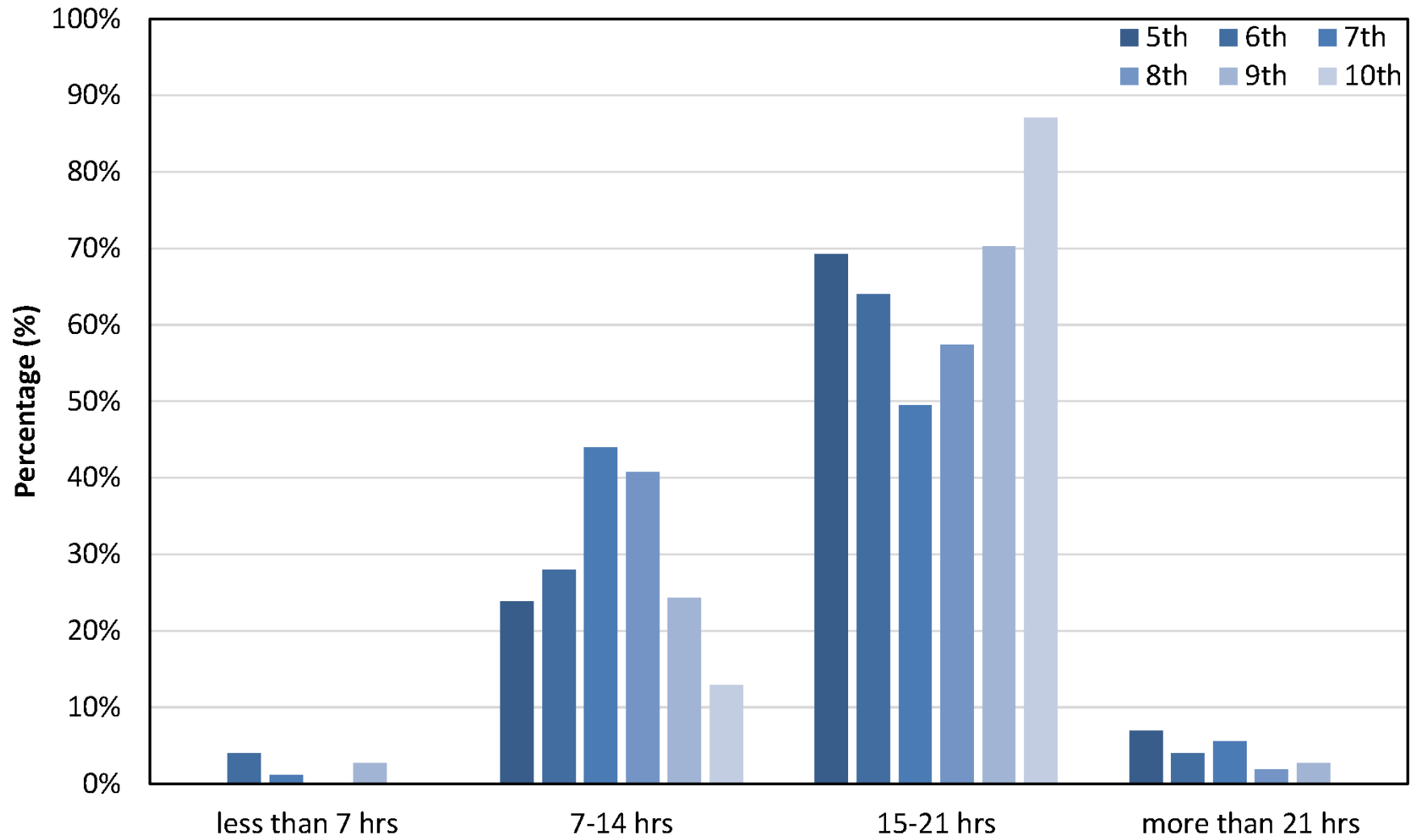


How many percent of the lectures this year have you participated in?



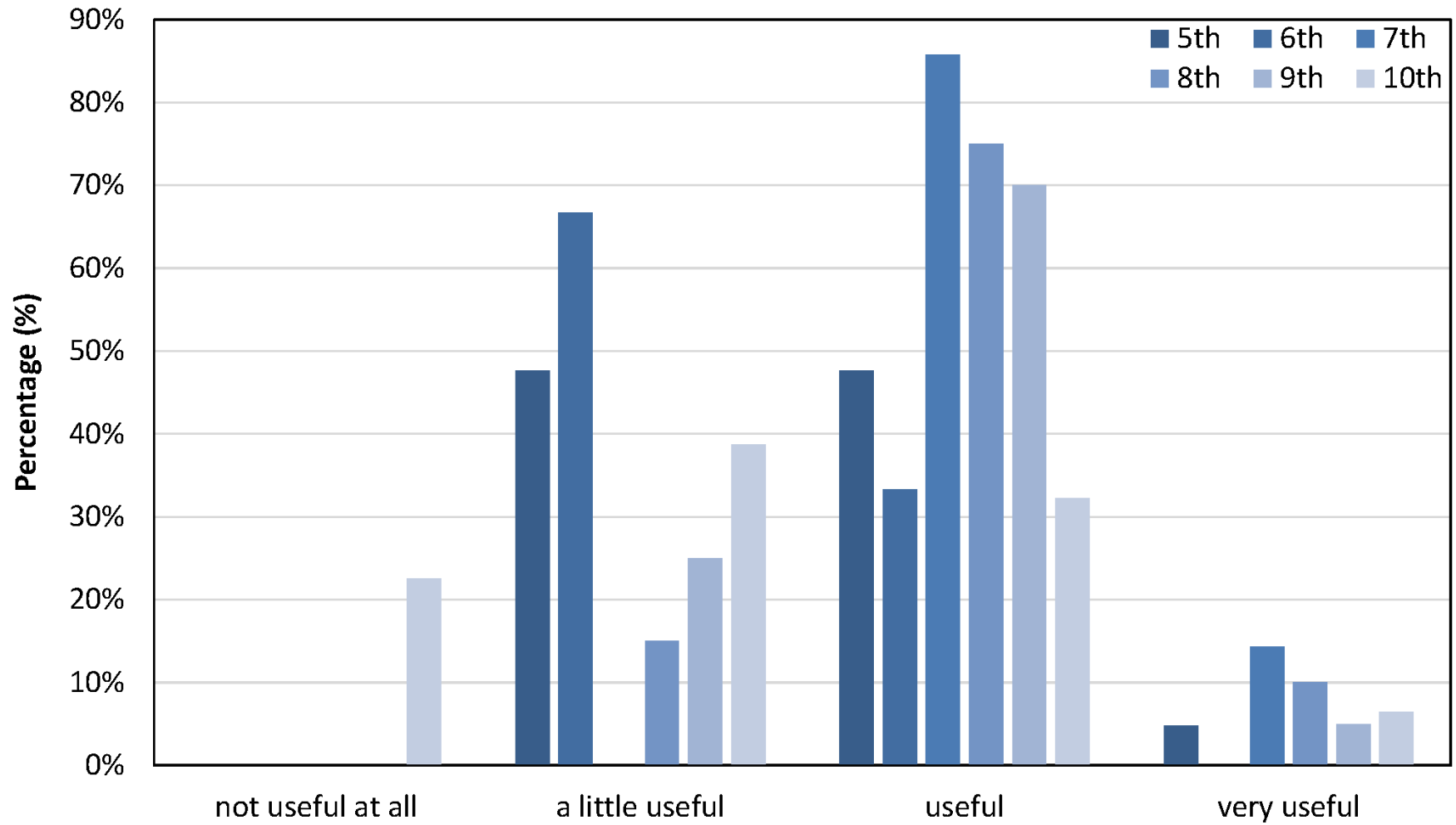
n = 461

How many hours do you use to read / study on your own during the week?



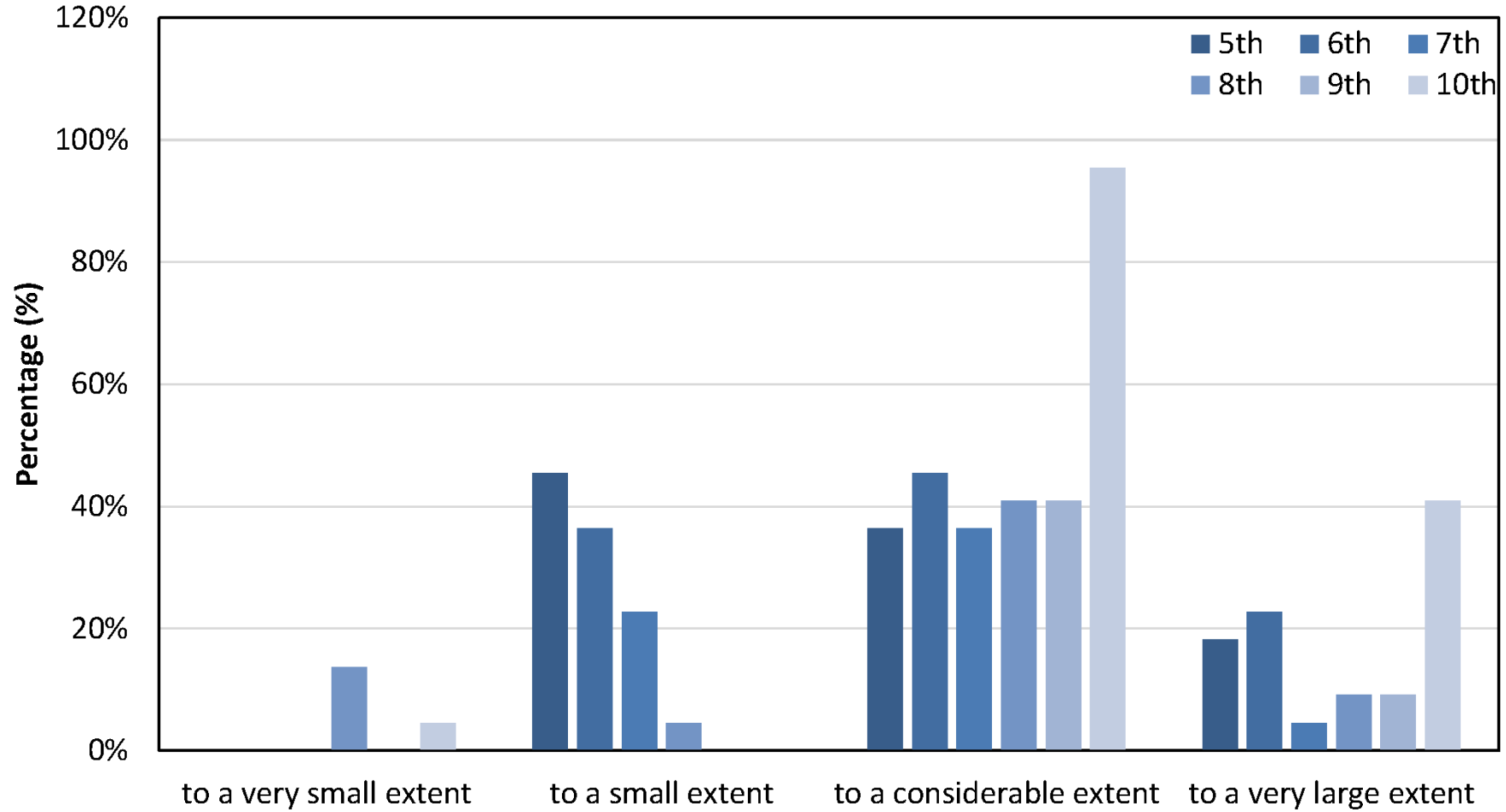
n = 461

How useful do you think it is to have an MCQ test in the middle of the semester?



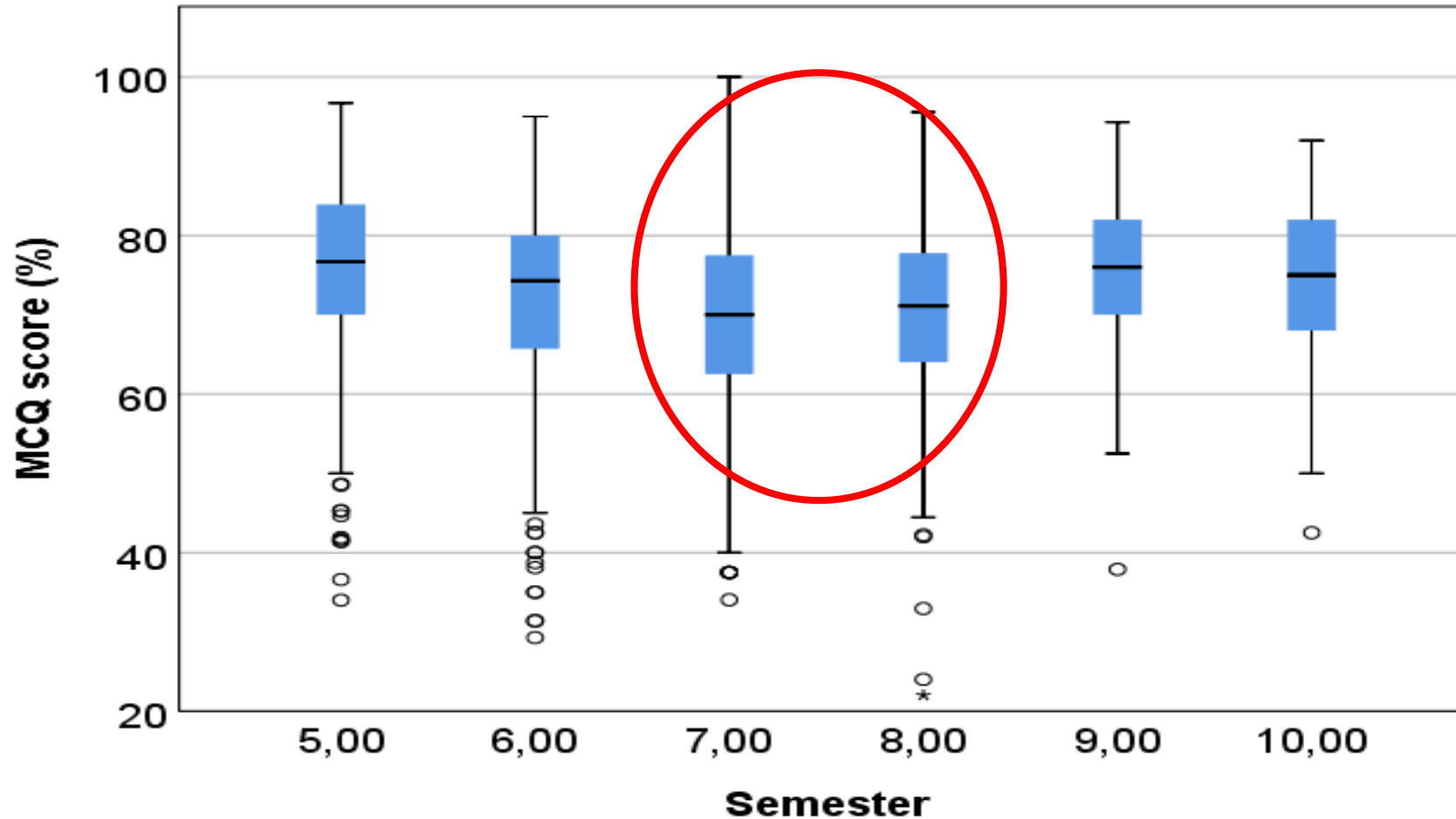
n = 140

To what extent have the MCQ tests led you into lecture notes / textbooks and checked questions you have been unsure about?



n = 140

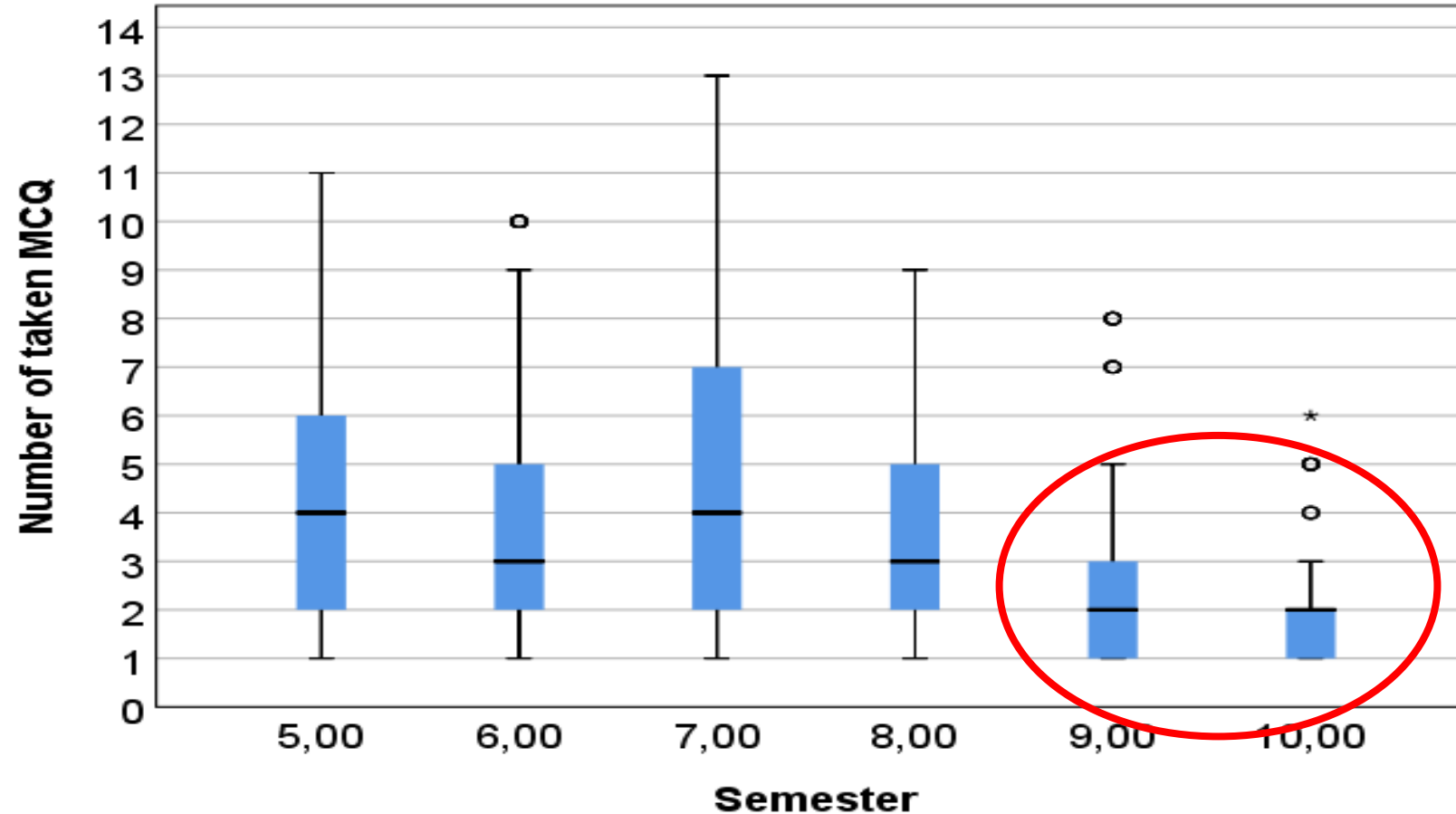
Student assessment vs semester



→ MCQ lowest for 7th and 8th sem

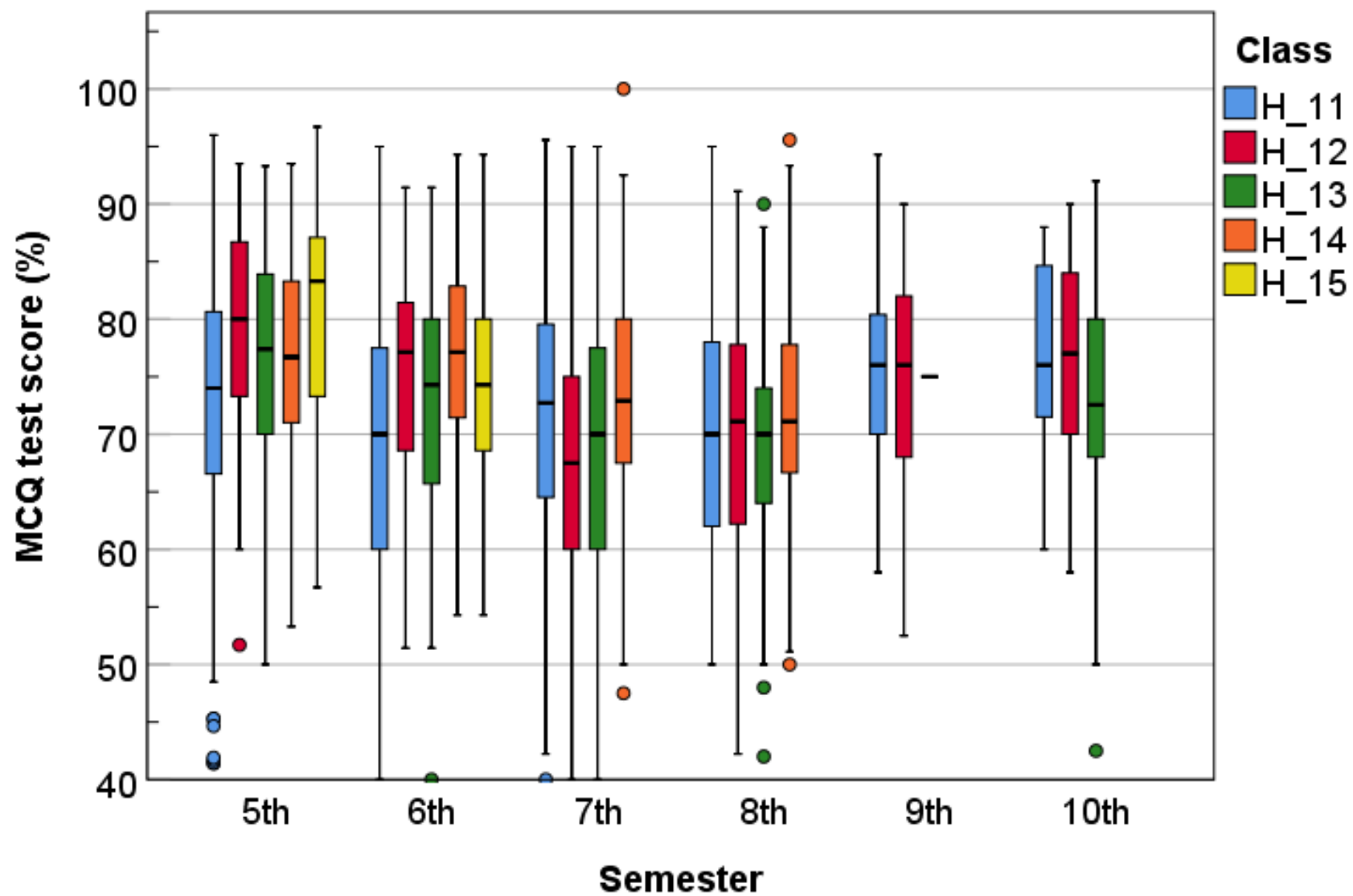
All group significant difference except 5 vs 9, 5 vs 10 and 9 vs 6, n=2230

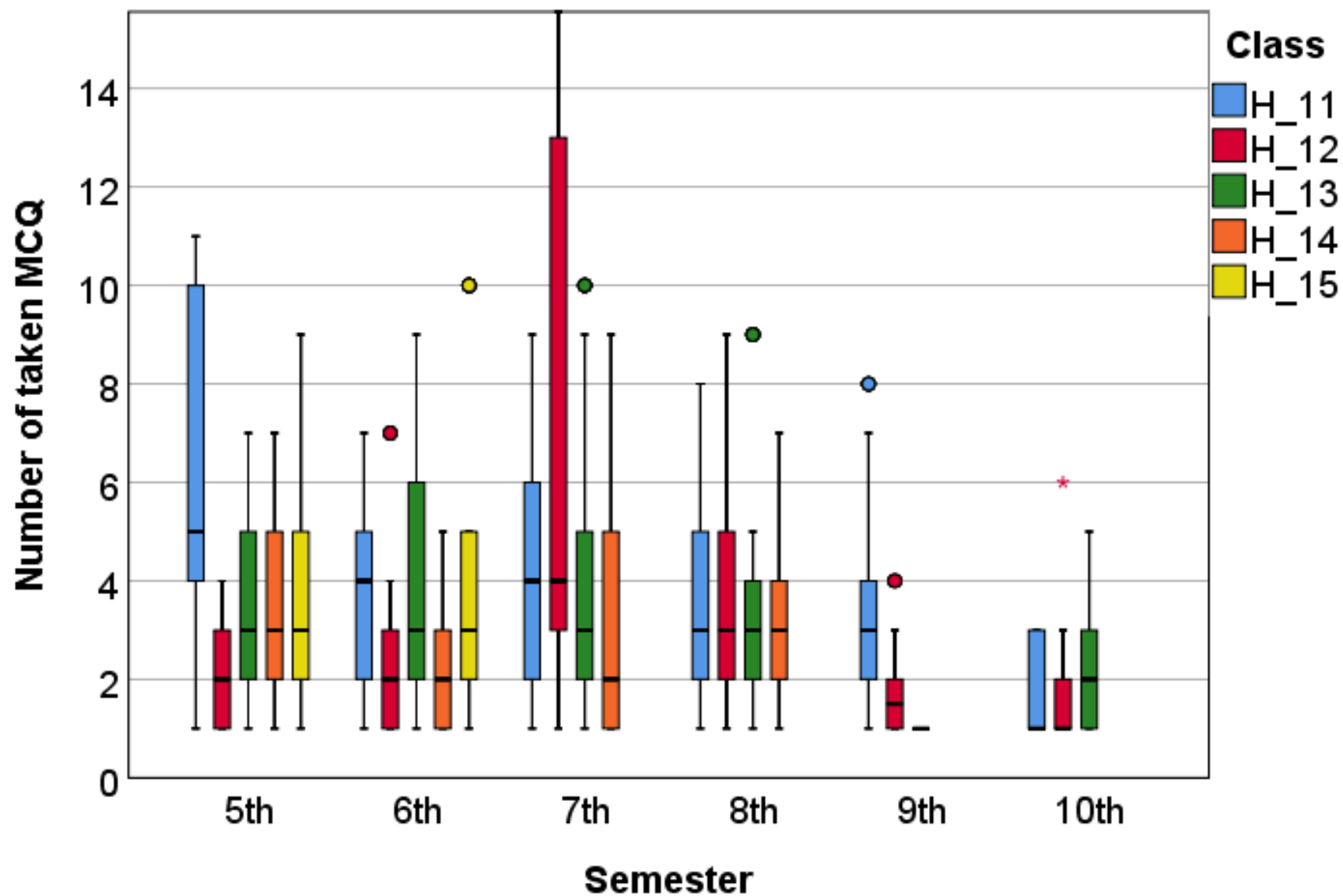
Student assessment vs semester

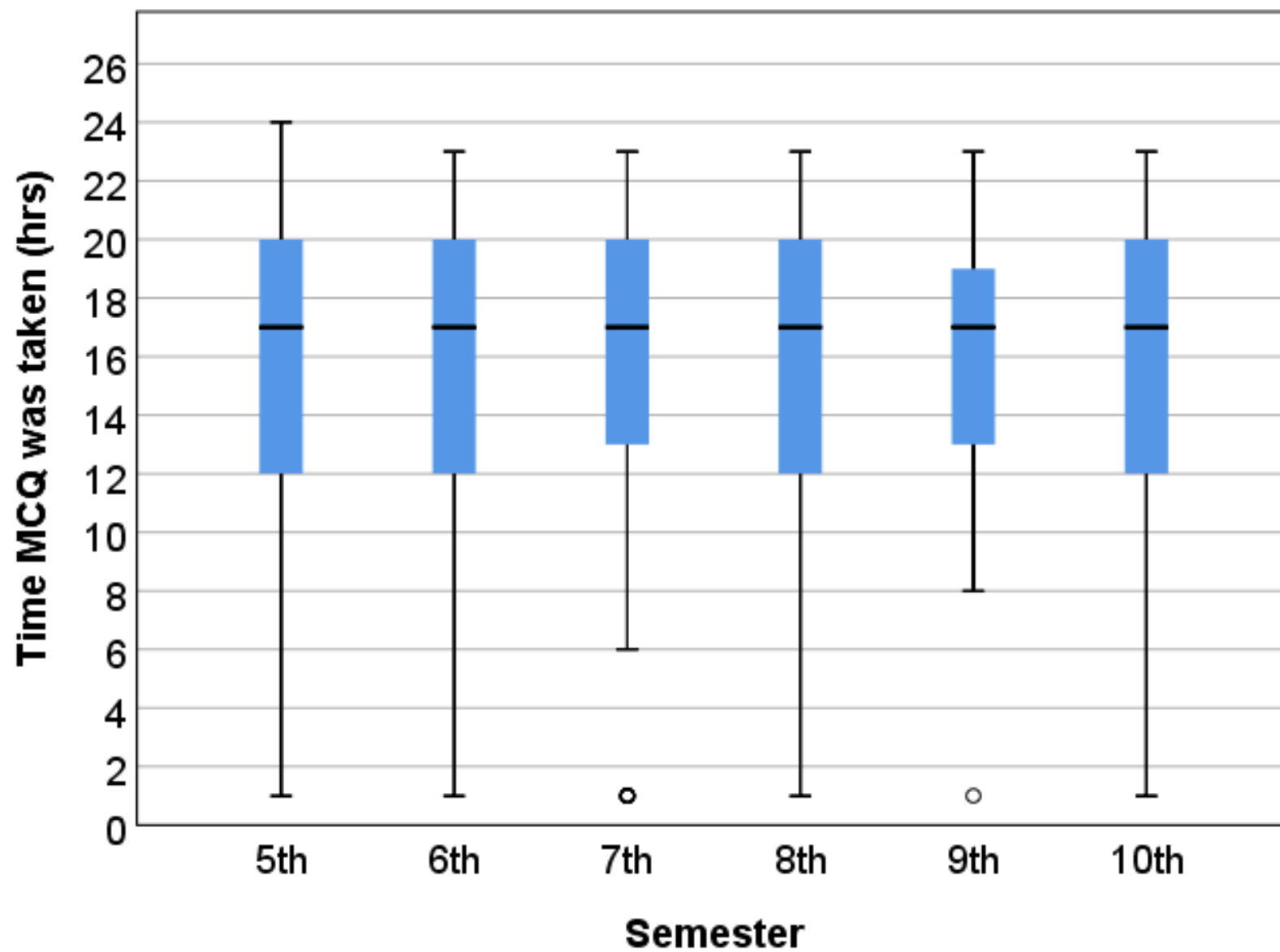


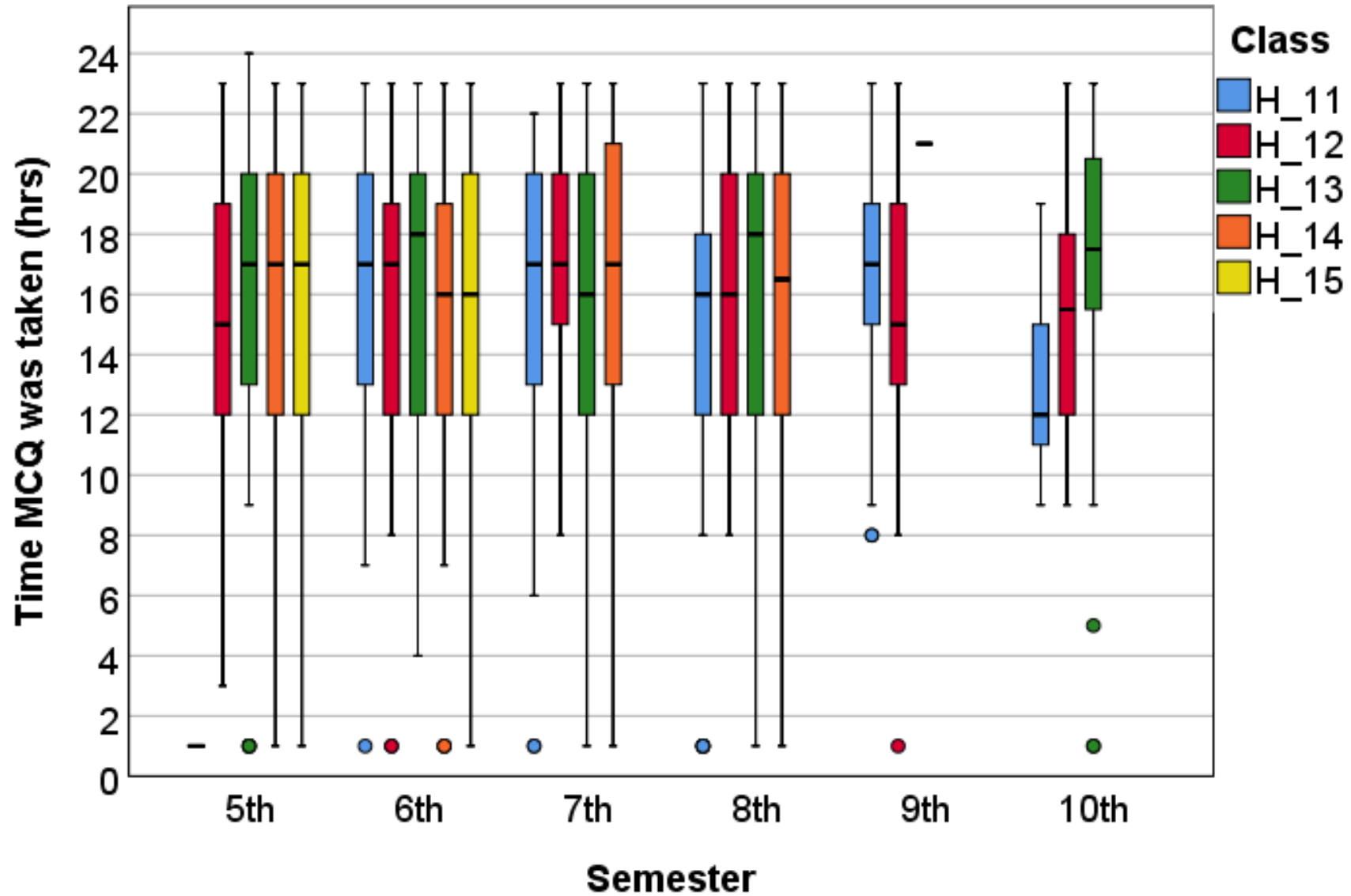
→ less retakes for 9th and 10th , **highest for 7th**

All groups significant difference except 5 vs 7, and 8 vs 6, n=2230









Student assessment

Pearson correlation	How many hours do you use to read / study on your own during the week?
Percent MCQ	0.425**
Number Of MCQ taken	-0.357**
How clear were the different questions formulated?	0.416**
How many percent of the lectures this year have you participated in?	0.403**

Small correlation if $0.1 < |r| < 0.3$, Medium corr. if $0.3 < |r| < 0.5$, Strong corr. if $0.5 < |r| < 1$
*. $P > 0.05$ level (1-tailed). ** $P > 0.01$ level (1-tailed).

	Semester	TimeMCQ	Percent	NumberOfMCQ	How useful is such an MCQ test?	To what extent do you know the knowledge goals in the individual subjects?	To what extent do you know the questions in the multiple-choice test from the knowledge goals0. please refer to the previous question?	To what extent have the questions been address in lectures?	How was the level of difficulty in the test?	How clear were the different questions formulated?	How many hours do you use to read / study on your own during the week?	How many percent of the lectures this year have you participated in?	What score did you expect to achieve the first time you completed the test?	What score did you get the first time you completed the test?	What was your maximum score?	have the MCQ tests led you into lecture notes / textbooks and checked questions you	have the MCQ tests that were added in the middle of each semester meant that you
Semester	1	0.006	-0.097**	-0.125**	-0.114**	0.000	0.101*	0.280**	-0.227**	0.046	-0.043	-0.170**	0.271**	-0.485**	0.477**	0.271**	0.477**
TimeMCQ	0.006	1	-0.006	0.061**	0.029	-0.039	-0.114**	0.057	0.033	0.028	0.149**	0.087*	-0.056	0.168	-0.097	-0.056	-0.097
Percent	-0.097**	-0.006	1	-0.242**	0.083*	-0.019	-0.145**	0.014	0.104*	0.248**	0.425**	0.383**	0.113	0.057	-0.066	0.113	-0.066
NumberOfMCQ	-0.125**	0.061**	-0.242**	1	-0.009	0.054	-0.066	-0.025	0.014	-0.167**	-0.357**	0.076	-0.117	0.241*	-0.110	-0.117	-0.110
How useful is such an MCQ test?	-0.114**	0.029	0.083*	-0.009	1	-0.240**	-0.311**	-0.071	0.007	-0.055	0.087*	0.026	0.006	0.321**	0.065	0.006	0.065
To what extent do you know the knowledge goals in the individual subjects?	0.000	-0.039	-0.019	0.054	-0.240**	1	0.038	0.191**	0.020	-0.014	-0.025	0.096*	-0.077	0.069	-0.236*	-0.077	-0.236*
To what extent do you know the questions in the multiple-choice test from the knowledae goals0. please refer to the	0.101*	-0.114**	-0.145**	-0.066	-0.311**	0.038	1	-0.063	-0.110*	-0.004	-0.123**	-0.249**	0.101	-0.311**	0.147	0.101	0.147
To what extent have the questions been address in lectures?	0.280**	0.057	0.014	-0.025	-0.071	0.191**	-0.063	1	-0.018	0.037	0.069	0.008	0.253*	-0.173	0.266**	0.253*	0.266**
How was the level of difficulty in the test?	-0.227**	0.033	0.104*	0.014	0.007	0.020	-0.110*	-0.018	1	0.209**	0.100*	0.155**	-0.056	0.198*	-0.142	-0.056	-0.142
How clear were the different questions formulated?	0.046	0.028	0.248**	-0.167**	-0.055	-0.014	-0.004	0.037	0.209**	1	0.416**	0.240**	0.067	-0.074	0.169	0.067	0.169
How many hours do you use to read / study on your own during the week?	-0.043	0.149**	0.425**	-0.357**	0.087*	-0.025	-0.123**	0.069	0.100*	0.416**	1	0.403**	0.115	-0.069	0.031	0.115	0.031
How many percent of the lectures this year have you participated in?	-0.170**	0.087*	0.383**	0.076	0.026	0.096*	-0.249**	0.008	0.155**	0.240**	0.403**	1	-0.051	0.119	-0.098	-0.051	-0.098
What score did you expect to achieve the first time you completed the test?	0.271**	-0.056	0.113	-0.117	0.006	-0.077	0.101	0.253*	-0.056	0.067	0.115	-0.051	1	-0.141	0.388**	1.000**	0.388**
What score did you get the first time you completed the test?	-0.485**	0.168	0.057	0.241*	0.321**	0.069	-0.311**	-0.173	0.198*	-0.074	-0.069	0.119	-0.141	1	-0.392**	-0.141	-0.392**
What was your maximum score?	0.477**	-0.097	-0.066	-0.110	0.065	-0.236*	0.147	0.266**	-0.142	0.169	0.031	-0.098	0.388**	-0.392**	1	0.388**	1.000**
To what extent have the MCQ tests led you into lecture notes / textbooks and checked questions you have been	0.271**	-0.056	0.113	-0.117	0.006	-0.077	0.101	0.253*	-0.056	0.067	0.115	-0.051	1.000**	-0.141	0.388**	1	0.388**
To what extent have the MCQ tests that were added in the middle of each semester meant that you have started	0.477**	-0.097	-0.066	-0.110	0.065	-0.236*	0.147	0.266**	-0.142	0.169	0.031	-0.098	0.388**	-0.392**	1.000**	0.388**	1